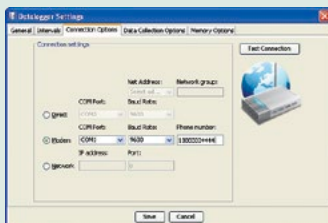


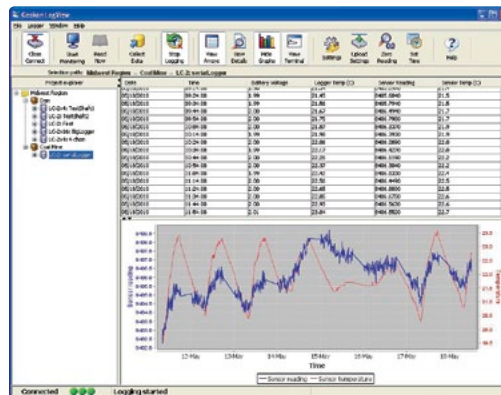
# LogView Software

## Key Features

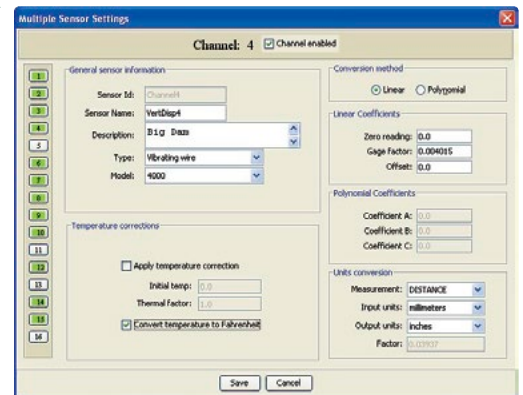
- Intuitive easy-to-use mouse driven interface
- Comprehensive configuration options
- Two types of real-time monitoring: text and graphics based
- Multi-panel GUI for parallel access to both textual and graphical presentations
- Explorer panel for quick access to projects, dataloggers, sensors, and data files
- Terminal emulation for troubleshooting and monitoring
- Supports RS-232 and RS-485 multi-drop protocols, TCP/IP Ethernet terminal servers and telephone modems
- Full online help menu



- Datalogger connection options include direct, modem and network.



• Text and Graphic Views for static and dynamic display of data.



• Settings options for multiple sensors.

## Program Function

LogView Software simplifies the task of configuration, communication, monitoring, data collection and data reduction using the Model 8001 (LC-1) and Model 8002 (LC-2) Series Dataloggers. The software is an easy to use, menu-based application, with a Project explorer “tree” in the left hand pane and “Views” in the right hand pane(s). LogView includes screens for configuration, connection, measurement and data collection, plus a real-time text-based monitor, graphical monitor and terminal emulator.

LogView is designed to make the tasks of configuring the datalogger, monitoring sensors, collecting data, managing data files, and applying corrections easier and faster. LogView is Object Oriented and uses a “Workspace” to store one or more “Projects.” A near infinite number of Workspaces can be created and shared between users. Connection to dataloggers is simple and quick with all datalogger settings easily accessible from the Project explorer’s context menu. Simply right-click on the selected datalogger to display available operations.

## Data acquisition

Data is collected from the datalogger, and automatically stored, with the click of a button. All stored data can be exported to a folder of the user’s choosing.

Data can be monitored in real-time using LogView

and copied directly from the text array view to the Windows® clipboard. Once in the clipboard, the data can be copied and pasted into any other document, such as an Excel® spreadsheet.

Graphical images can be saved or printed at any time and the Graph “View” can be customized to suit the user’s preferences.

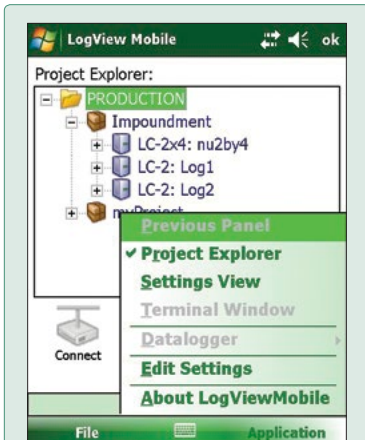
## Viewing Data

All “views” of LogView are designed for maximum utility and can be configured for either split-screen or full-screen use.

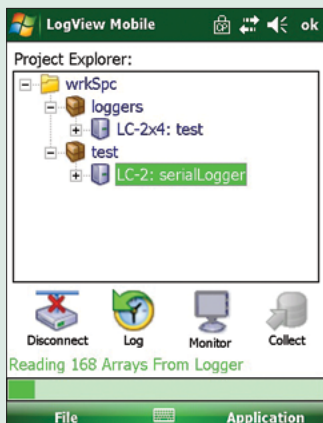
## System Requirements

Operating Systems	Windows® 2000, XP, XP Pro, Vista or 7
Processor	Pentium® IV (or equivalent) or higher running at 500 MHz or better
Memory	64 MB (minimum) 256 MB or more (recommended)
Hard Disk	20 MB (minimum) 30 MB or more (recommended)

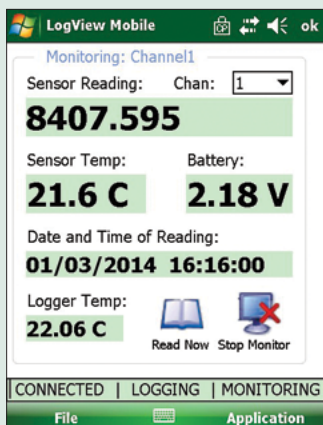
# LogView Mobile Software



• Application Menu screen.



• Data Collection screen.



• Datalogging and Monitoring screen.



• Model FPC-1 Field PC (connected to the Model 8002-1A-2 (LC-2) Single Channel Datalogger).

## Program Function

LogView Mobile performs most of the same functions as LogView but was designed to operate on a ruggedized, handheld field PC such as the Model FPC-1. As such, LogView Mobile is ideally suited for logger setup and data collection in harsh environments that are too extreme for the use of a typical laptop PC.

LogView Mobile has all the configuration and data collection capability of LogView, but lacks some of the graphical viewing and analysis capability. LogView Mobile can share existing configurations with the desktop version of LogView. Both versions of LogView use a "Workspace" to store one or more "Projects."

Connection to dataloggers is simple and quick, with all datalogger settings easily accessible from the Project Explorer and Application Menu. Selections can be made using the arrow and <Enter> buttons and/or with the

stylus, which is easily grasped, even with a gloved hand. Data is collected from the datalogger, and automatically stored, with the tap of the stylus. All stored data can be exported to a folder of the user's choosing and easily synchronized to a base PC for further analysis.

## System Requirements

Operating System	Windows® Mobile 6.1 or greater
.NET Frameworks	Microsoft® Compact Framework 3.5
Storage Memory	10 MB free (minimum) 20 MB free (recommended)
Program Memory	5 MB free (minimum) 10 MB free (recommended)



The World Leader in Vibrating Wire Technology™

Geokon, Incorporated  
48 Spencer Street  
Lebanon, NH 03766  
USA

Geokon maintains an ongoing policy of design review and reserves the right to amend products and specifications without notice.

1 • 603 • 448 • 1562  
1 • 603 • 448 • 3216  
geokon@geokon.com  
www.geokon.com

©2015 Geokon, Incorporated. All Rights Reserved | Doc. Rev. B.1, 02/15