



*48 Spencer Street  
Lebanon, NH 03766, USA  
Tel: 603-448-1562  
Fax: 603-448-3216  
Email: [geokon@geokon.com](mailto:geokon@geokon.com)  
<http://www.geokon.com>*

*Instruction Manual*

**Model 8600-2**

**Micro-6000 Multi-Channel Datalogger**

No part of this instruction manual may be reproduced, by any means, without the written consent of GEOKON®.

The information contained herein is believed to be accurate and reliable. However, GEOKON® assumes no responsibility for errors, omissions or misinterpretation. The information herein is subject to change without notification.

Copyright © 2022 by GEOKON®  
(Doc Rev G, 6/23/22)



## ***Warranty Statement***

GEOKON warrants its products to be free of defects in materials and workmanship, under normal use and service for a period of 13 months from date of purchase. If the unit should malfunction, it must be returned to the factory for evaluation, freight prepaid. Upon examination by GEOKON, if the unit is found to be defective, it will be repaired or replaced at no charge. However, the WARRANTY is VOID if the unit shows evidence of having been tampered with or shows evidence of being damaged as a result of excessive corrosion or current, heat, moisture or vibration, improper specification, misapplication, misuse or other operating conditions outside of GEOKON's control. Components which wear or which are damaged by misuse are not warranted. This includes fuses and batteries.

GEOKON manufactures scientific instruments whose misuse is potentially dangerous. The instruments are intended to be installed and used only by qualified personnel. There are no warranties except as stated herein. There are no other warranties, expressed or implied, including but not limited to the implied warranties of merchantability and of fitness for a particular purpose. GEOKON is not responsible for any damages or losses caused to other equipment, whether direct, indirect, incidental, special or consequential which the purchaser may experience as a result of the installation or use of the product. The buyer's sole remedy for any breach of this agreement by GEOKON or any breach of any warranty by GEOKON shall not exceed the purchase price paid by the purchaser to GEOKON for the unit or units, or equipment directly affected by such breach. Under no circumstances will GEOKON reimburse the claimant for loss incurred in removing and/or reinstalling equipment.

Every precaution for accuracy has been taken in the preparation of manuals and/or software, however, GEOKON neither assumes responsibility for any omissions or errors that may appear nor assumes liability for any damages or losses that result from the use of the products in accordance with the information contained in the manual or software.



# TABLE of CONTENTS

<b>1. OVERVIEW .....</b>	<b>1</b>
<b>2. SOFTWARE .....</b>	<b>1</b>
<b>3. HARDWARE .....</b>	<b>1</b>
3.1 INSTALLATION .....	2
3.2 POWER .....	2
3.3 EARTH GROUND .....	3
3.4 GAUGES .....	3
3.5 COMMUNICATIONS .....	3
3.5.1 USB communication .....	3
3.5.2 Ethernet communication .....	4
<b>4. BATTERY MAINTENANCE .....</b>	<b>6</b>
4.1 AC POWER .....	6
4.2 SOLAR POWER .....	6
4.3 EXTERNAL BATTERY .....	6
4.4 BATTERY REPLACEMENT .....	6
4.5 FUSES .....	6
<b>5. TROUBLESHOOTING .....</b>	<b>7</b>
<b>APPENDIX A. SPECIFICATIONS .....</b>	<b>9</b>
A.1 MODEL 8600-2 DATALOGGER .....	9
A.2 CR6 MEASUREMENT AND CONTROL MODULE .....	9
A.3 MODEL 8032 MULTIPLEXER .....	9
<b>APPENDIX B. SHIP LIST .....</b>	<b>10</b>
B.1 HARDWARE .....	10
<b>APPENDIX C. DATA STORAGE .....</b>	<b>11</b>
C.1 DATA STORAGE .....	11
C.2 DATA STORAGE EXAMPLE .....	11
C.2.1 Overwrite Times when Data is Stored Once a Minute .....	11
C.2.2 Overwrite Times when Data is Stored Once an Hour .....	11
C.2.3 Overwrite Times when Data is Stored Once a Day .....	11
<b>APPENDIX D. SYSTEM WIRING .....</b>	<b>12</b>
D.1 CR6 WIRING .....	12
D.2 CHARGER PORT WIRING .....	12
D.3 UNREGULATED CHARGER WIRING .....	12
D.4 REGULATED CHARGER (DEFAULT) .....	13
D.5 EXTERNAL POWER CABLE .....	13
D.6 FUSE DESIGNATIONS FOR POWER DISTRIBUTION BOARD .....	13
<b>APPENDIX E. LOGGNET QUICK START GUIDE .....</b>	<b>14</b>
E.1 OVERVIEW .....	14
E.2 GETTING STARTED .....	14
E.2.1 Program Files .....	14
E.2.2 Connection Setup .....	14
E.2.3 Connecting to the Datalogger .....	19
E.3 MODIFYING THE DATALOGGER PROGRAM .....	20
E.3.1 Scan Interval .....	20
E.3.2 Zero Readings and Gauge Factors .....	20
E.3.3 Temperature Zero Readings and Thermal Factors .....	21
E.3.4 Output Labels .....	21
E.4 UPLOADING FILES .....	22

<i>E.4.1 Sending the Include file (.DLD)</i> .....	22
<i>E.4.2 Sending the Main program file (.CR6)</i> .....	24
E.5 DATA HANDLING .....	24
<i>E.5.1 Data Collection Configuration</i> .....	24
<i>E.5.2 Live Monitoring</i> .....	25
<i>E.5.3 Collecting Data</i> .....	26
<b>APPENDIX F. EXCERPTS FROM THE 8032 MULTIPLEXER MANUAL</b> .....	<b>27</b>
F.1 THEORY OF OPERATION .....	27
F.2 MICRO-6000 MODE OF OPERATION .....	29
F.3 WIRING .....	31
<i>F.3.1 Gauge Wiring</i> .....	31
<i>F.3.2 Connector and Cable Wiring</i> .....	33
<i>F.3.3 Model 8032-27 and Load Cell Wiring</i> .....	34
F.4 TROUBLESHOOTING .....	35
F.5 8032 MULTIPLEXER SPECIFICATIONS .....	35
F.6 DAISY-CHAIN OPERATION .....	36
F.7 MAXIMUM 8032-5 (TAN CABLE) CABLE LENGTHS .....	38
<b>APPENDIX G. CELLULAR MODEM COMMUNICATIONS</b> .....	<b>39</b>
G.1 SUPPLY .....	39
G.2 INSTALL .....	40
G.3 COMMUNICATIONS .....	41

## FIGURES

FIGURE 1 - TYPICAL MICRO-6000 CONFIGURATION.....	2
FIGURE 2 - POWER DISTRIBUTION CIRCUIT BOARD.....	2
FIGURE 3 - TYPICAL BOTTOM VIEW MICRO-6000.....	3
FIGURE 4 - ETHERNET SETTINGS.....	4
FIGURE 5 - ADD COMMUNICATION PORT.....	4
FIGURE 6 - SELECT "PACKBUSPORT".....	5
FIGURE 7 - SELECT CR6SERIES.....	5
FIGURE 8 - ADD IP ADDRESS.....	5
FIGURE 9 - LAUNCH MENU, DEVICE CONFIG UTILITY.....	15
FIGURE 10 - INSTALL DEVICE DRIVER.....	16
FIGURE 11 - LAUNCH MENU, SETUP.....	16
FIGURE 12 - ADD COMMUNICATIONS PORT (ROOT).....	17
FIGURE 13 - SELECT DEVICE TO ADD.....	17
FIGURE 14 - SELECT COMMUNICATIONS PORT.....	18
FIGURE 15 - SELECT MAXIMUM BAUD RATE.....	18
FIGURE 16 - LAUNCH MENU, CONNECT.....	19
FIGURE 17 - CONNECT TO THE CR6.....	19
FIGURE 18 - SET THE SCAN INTERVAL.....	20
FIGURE 19 - SET ZERO READINGS AND GAUGE FACTORS.....	20
FIGURE 20 - SET TEMPERATURE ZERO AND THERMAL FACTOR.....	21
FIGURE 21 - UNCOMMENT SPECIFIED LINE.....	21
FIGURE 22 - ALIAS NAMES.....	22
FIGURE 23 - TRANSFER FILE TO DATALOGGER.....	22
FIGURE 24 - SELECT DLD FILE TYPE.....	23
FIGURE 25 - UNCHECK "RUN NOW".....	23
FIGURE 26 - SEND THE MAIN CRBASIC PROGRAM FILE.....	24
FIGURE 27 - LAUNCH MENU, SETUP.....	24
FIGURE 28 - DATA FILES TAB.....	25
FIGURE 29 - LAUNCH MENU, CONNECT.....	25
FIGURE 30 - LIVE MONITORING.....	26
FIGURE 31 - COLLECTING DATA.....	26
FIGURE 32 - 16-CHANNEL SWITCHING BLOCK DIAGRAM.....	28
FIGURE 33 - 32-CHANNEL SWITCHING BLOCK DIAGRAM.....	28
FIGURE 34 - 16 OR 32-CHANNEL SELECTION.....	29
FIGURE 35 - GK-403/DATALOGGER SELECTION.....	29
FIGURE 36 - 16-CHANNEL MICRO-6000 CHANNEL SELECTION TIMING.....	30
FIGURE 37 - 32-CHANNEL MICRO-6000 CHANNEL SELECTION TIMING.....	30
FIGURE 38 - TERMINAL BOARD LAYOUT.....	32
FIGURE 39 - MODEL 8032-27 JUMPER WIRE ASSEMBLY.....	34
FIGURE 40 - DAISY-CHAIN CONFIGURATION (DOES NOT APPLY TO MODEL 8600-2).....	37
FIGURE 41 - RECOMMENDED MAXIMUM CABLE LENGTH (DOES NOT APPLY TO 8600-2).....	38
FIGURE 42 - MODEL 8600-2 WITH CELLULAR MODEM INSTALLED.....	40
FIGURE 43 - ADD COMMUNICATIONS PORT (ROOT).....	41
FIGURE 44 - SELECT "PAKBUSPORT".....	41
FIGURE 45 - SELECT DEVICE TO ADD.....	41
FIGURE 46 - ENTER INTERNET IP ADDRESS.....	42

## TABLES

TABLE 1 - 8600-2 SPECIFICATIONS .....	9
TABLE 2 - TOTAL NUMBER OF ARRAYS AVAILABLE PER MULTIPLEXER .....	11
TABLE 3 - AMOUNT OF TIME UNTIL DATA OVERWRITE OCCURS WHEN DATA IS STORED EVERY 60 SECONDS .....	11
TABLE 4 - AMOUNT OF TIME UNTIL DATA OVERWRITE OCCURS WHEN DATA IS STORED EVERY 60 MINUTES .....	11
TABLE 5 - AMOUNT OF TIME UNTIL DATA OVERWRITE OCCURS WHEN DATA IS STORED ONCE PER DAY .....	11
TABLE 6 - CR6 WIRING .....	12
TABLE 7 - CHARGER PORT WIRING .....	12
TABLE 8 - UNREGULATED CHARGER WIRING .....	12
TABLE 9 - REGULATED CHARGER DEFAULT WIRING .....	13
TABLE 10 - EXTERNAL POWER CABLE WIRING .....	13
TABLE 11 - FUSES DESIGNATIONS FOR POWER DISTRIBUTION BOARD .....	13
TABLE 12 - 16-CHANNEL MULTIPLEXER/TERMINAL BOARD WIRING .....	31
TABLE 13 - 32-CHANNEL MULTIPLEXER/TERMINAL BOARD WIRING .....	31
TABLE 14 - J4 (I/O) CONNECTOR .....	33
TABLE 15 - P1 (I/O) CONNECTOR .....	33
TABLE 16 - COMMON CONDUCTOR CHART .....	34
TABLE 17 - STANDARD VW LOAD CELL WIRING WHEN USING 8032-27 .....	34
TABLE 18 - MULTIPLEXER SPECIFICATIONS .....	36
TABLE 19 - DAISY-CHAIN OPERATION/CHANNELS ACCESSED .....	37



## **1. OVERVIEW**

The MICRO-6000 Datalogger is designed to support the reading of a large number of GEOKON Vibrating Wire Instruments for various unattended data collection applications through the use of an internal GEOKON Model 8032 Multiplexer. Weatherproof packaging allows the unit to be installed in field environments where inhospitable conditions prevail. The Nema 4X enclosure also has a provision for locking to limit access to responsible field personnel.

A basic datalogging system consists of the Campbell Scientific CR6 Datalogger and an internal Model 8032 Multiplexer. Multiplexers expand the system by increments of 16 or 32 channels depending on the instrument type and configuration (see Appendix F for more information).

## **2. SOFTWARE**

The Micro-6000 Datalogger is operated by a download file that is generated by a software program. GEOKON supplies LoggerNet software (developed by Campbell Scientific, Logan, Utah). Please refer to the manual supplied with the software for instructions on installing the software and creating the required download file for Datalogger operation. A basic starter CRBasic program (STARTPROG) can be provided upon request. LoggerNet 4.3+ is required for the CR6 Datalogger.

## **3. HARDWARE**

The controller portion of the MICRO-6000 Datalogger consists of a Campbell Scientific CR6 Measurement and Control Datalogger. To gain an understanding on the workings and capabilities of the CR6 it is necessary to read the Overview section of the CR6 User Manual. The CR6 User Manual is available in pdf format at:

<https://s.campbellsci.com/documents/us/manuals/cr6.pdf>

The CR6 Datalogger provides the required excitation and signal processing for the Vibrating Wire sensors connected to the Datalogger. The CR6 uses Campbell Scientific's VSpect spectral analysis to find the resonant frequency of the GEOKON Vibrating Wire Gauge. The CR6 is also used to measure the thermistor used in GEOKON's Vibrating Wire instruments. For complete specifications of the Vibrating Wire Measurements please refer to the CR6 Datalogger User Manual.

A provided IP68 rated Regulated AC charger is used to provide the charging voltage for proper maintenance of the installed lead acid battery. An internal power distribution circuit board contains fused terminal blocks used to provide a nominal 12 VDC supply for the CR6 Datalogger and accessories. A regulated Solar panel can be used in place of the regulated AC charger assuming the maximum short circuit current does not exceed six amps.

The Model 8032 Multiplexer expands the number of channels that can be read by the MICRO-6000 Datalogger. The channel switching is accomplished by mechanical relays mounted on the underside of the circuit board and the transducer connections are accomplished by friction locking terminals. Power, Reset and Clocking for the Multiplexer are supplied by the MICRO-6000. The Model 8032 Multiplexer can be configured for 16x4 or 32x2 channels depending on the application. Please see the Model 8032 Instruction Manual for more information.

A 12V – 7Ah lead acid battery is used to provide power for the Datalogger. The battery supports operating power for a limited period of time should the AC or solar power, used to maintain the battery, be interrupted. Under normal operating conditions and proper maintenance, the life expectancy of the battery is approximately five years

### 3.1 Installation

The recommended method of installation involves attaching the various enclosures (MICRO-6000 and Multiplexers) to a fixed structure, such as a wall, in an upright position (Figure 1). Mounting dimensions shown in inches.



Figure 1 - Typical Micro-6000 Configuration

### 3.2 Power

After the Datalogger is installed the GEOKON Regulated AC Charger or Regulated Solar Panel can be connected to the three-pin charger port on the Datalogger. The supply voltage to the Micro-6000 will be “Off” by default and the On/Off switch SW1 on the Power Distribution circuit board should be switched to the “On” position (Figure 2). The Internal Lead Acid battery will charge in either position. It is recommended that the charger be left plugged in at all times (Section 4.1). Additionally, a GEOKON Unregulated AC Charger or Solar Panel can be used as the three-pin charger port is also wired to the CR6 built in Charge Regulator.

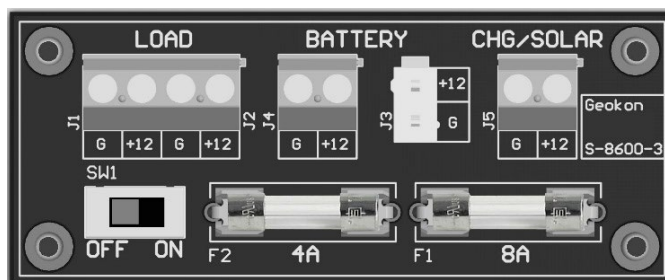


Figure 2 - Power Distribution Circuit Board

### 3.3 Earth Ground

An earth grounding lug is supplied on the exterior of the Micro-6000 enclosure to connect the system to earth ground (Figure 3). A grounding rod can be driven (or other suitable attachment to earth utilized) to ground the system and provide a path to earth for protection against a lightning strike or other transient voltage. A two to two and a half meter (six to eight foot) copper grounding rod connected to the Dataloggers grounding lug with a large gauge wire (12 AWG or larger) is recommended. The earth connection should be made as close to the Datalogger as possible.

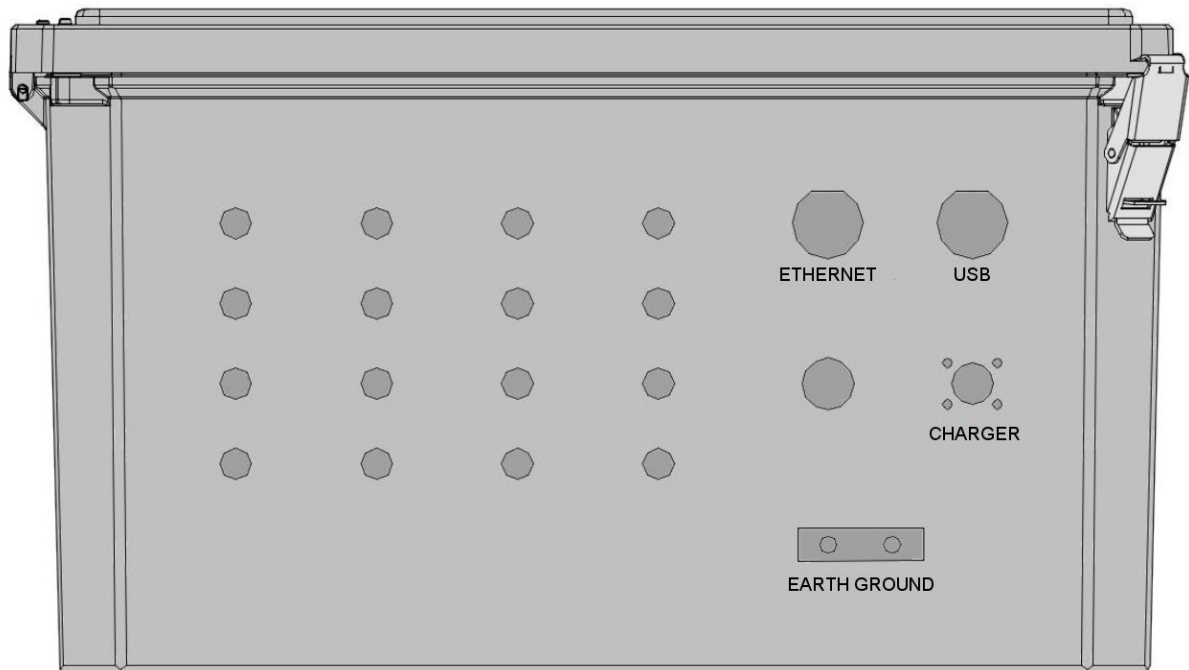


Figure 3 - Typical Bottom View MICRO-6000

### 3.4 Gauges

Following enclosure installation, GEOKON Vibrating Wire sensors can be connected to the internal Multiplexer. Please refer to the Multiplexer instruction manual for the appropriate connection description. Addition Start Guides can be provided for other types of gauges or custom configurations.

### 3.5 Communications

#### 3.5.1 USB communication

Standard direct communications with the Datalogger is established by connecting the Micro-6000 USB port (Figure 3) to an available USB port on the computer. A one-meter (three foot) COM-113 USB A-A Male cable is supplied with every new order.

A USB Driver for the CR6 must be installed prior to communications. The Device Configuration Utility can be found under Utilities on the main LoggerNet Screen.

### 3.5.2 Ethernet communication

Ethernet communications with the Datalogger is established by connecting the Micro-6000 Ethernet port (Figure 3) to an available Ethernet port on the computer. A two-foot COM-132 Ethernet 10/100 Base-T Crossover cable is supplied with every new order.

The CR6 must first be programmed with the user assigned IP Address using Device Configuration Utility (available on Campbell Scientific's Web site). Select the correct Device Type (CR6) and connect. Make necessary changes to the Ethernet tab and save (Figure 4). The IP Address, Subnet Mask, and IP Gateway should be provided by your Network Administrator or IT personnel.

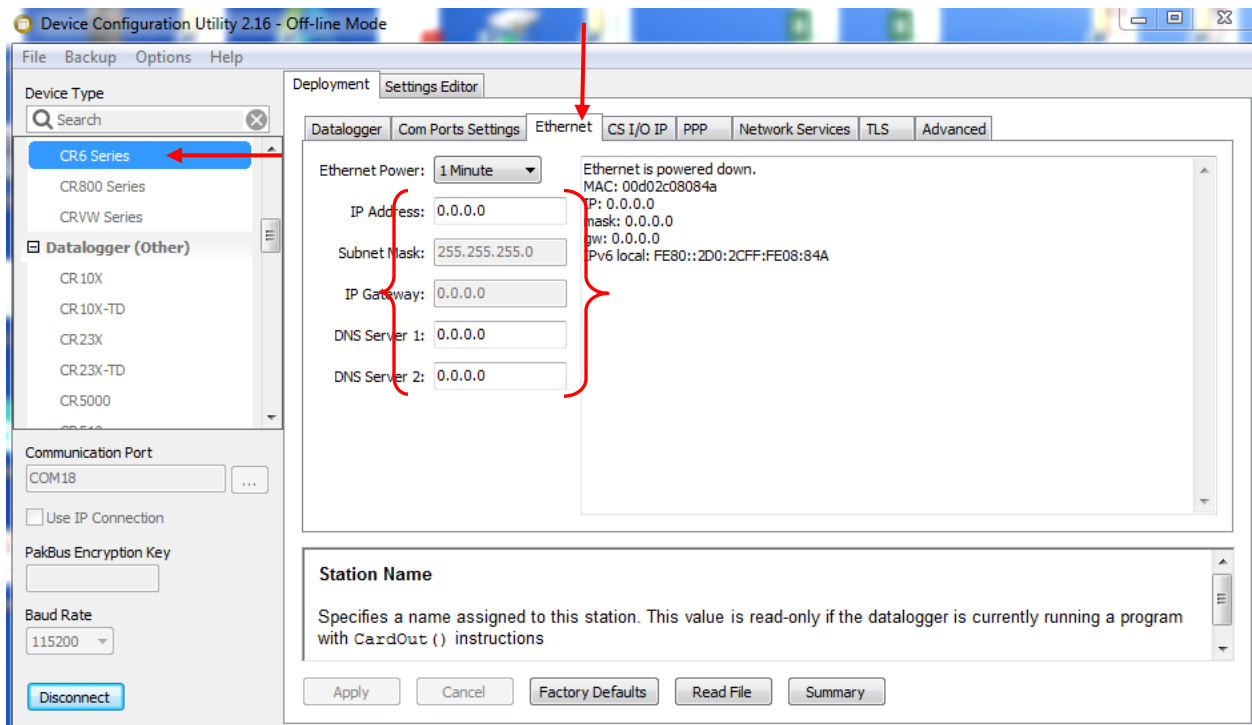


Figure 4 - Ethernet Settings

After the device configure utility has been setup, LoggerNet Software must be configured.

To add a communication port in LoggerNet, press the “Add Root” button and then select “IPPort” (Figure 5).

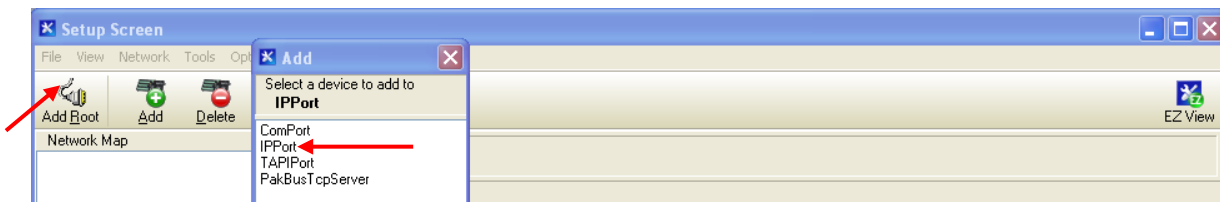


Figure 5 - Add Communication Port

Next, Select “PakBusPort (Other Loggers)” (Figure 6)

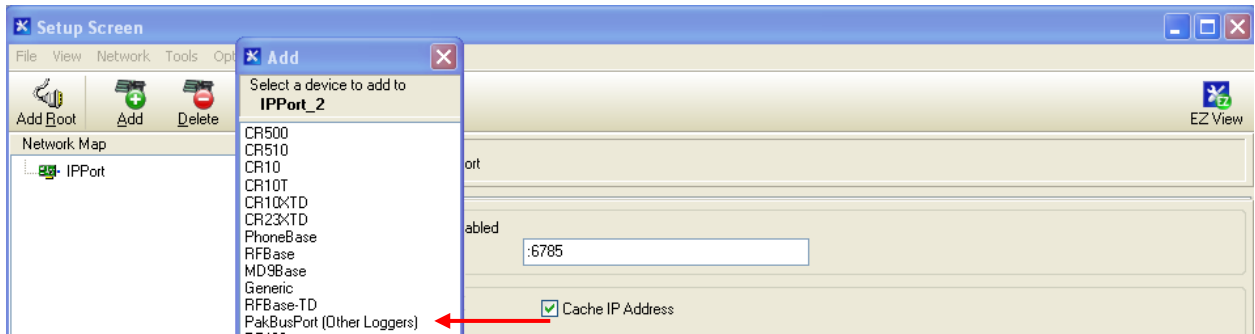


Figure 6 - Select “PackBusPort”

Finally, select “CR6 Series” and then click “Close” (Figure 7).

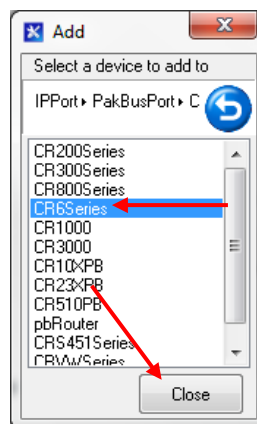


Figure 7 - Select CR6Series

After closing the “Add” window, press the “**Apply**” button located at the bottom left of the Setup Screen.

Next, enter the IP Address. The IP Address must be followed by “:6785” (see Figure 8), which represents the default port of the CR6 10/100 Ethernet.

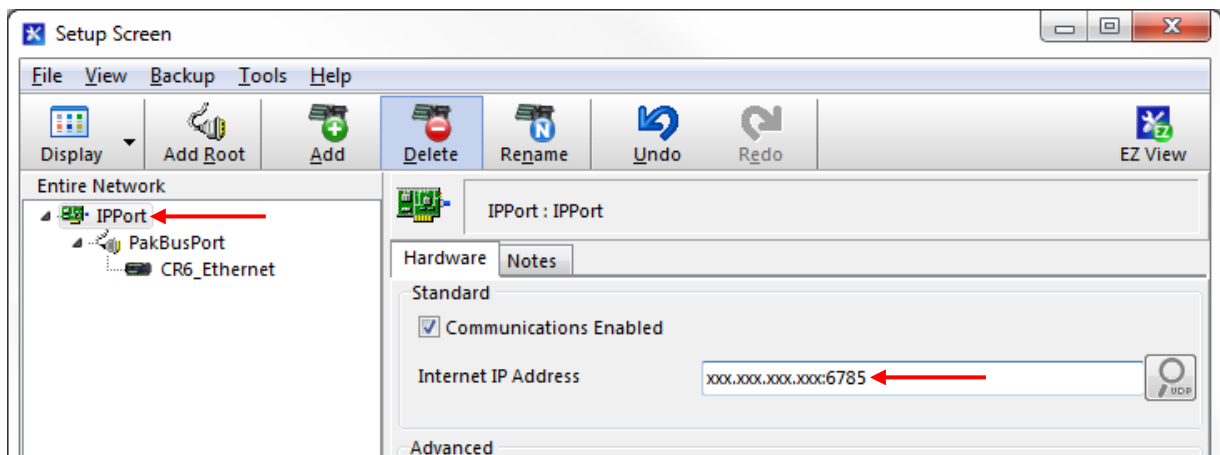


Figure 8 - Add IP Address

When finished, press the “**Apply**” button at the bottom left of the Setup Screen. Minimize or close the Setup Screen and go back to the LoggerNet Launch Menu.

## **4. BATTERY MAINTENANCE**

### **4.1 AC Power**

The MICRO-6000 is supplied with an external AC to DC Rain Proof Regulated Smart Charger for maintaining the charge of the internal battery which provides power to the Datalogger and peripherals. It is imperative that a regulated charging source remain connected to the Datalogger as the battery installed in the Datalogger is only provided as a temporary source of power should the power supply be disconnected or mains power interrupted. Actual run time, solely on battery power, will vary for each Datalogger system and depends on the hardware configuration and sensor scan interval. If the battery voltage drops below 9.6 volts operation of the Datalogger will become erratic as evidenced by communication problems and possible improper measurements. Additionally, a GEOKON unregulated AC charger can be used as the three pin Charger port is also wired to the CR6 built in Charge Regulator.

### **4.2 Solar Power**

If AC mains power is not available, a properly sized regulated solar panel can be used to provide power to maintain the charge state of the battery. The size of the solar panel is determined by geographic location of the Datalogger, hardware configuration, communications interval and the sensor scan interval. Additionally, a GEOKON Unregulated Solar Panel can be used as the three pin Charger port is also wired to the CR6 built in Charge Regulator.

### **4.3 External Battery**

Additionally, a large external battery, such as a deep cycle marine battery, can be connected to the Datalogger via the supplied external power cable to provide power to the Datalogger and peripherals. When using this type of battery, the internal battery should be manually disconnected from the system to prevent parasitic drain on the external battery.

### **4.4 Battery Replacement**

If the internal Lead Acid Battery has failed it is recommended that the unit be returned to the factory for service by GEOKON personnel. However, with skilled personnel and appropriate tools, it is possible for the user to replace the battery. Consult the factory for information.

### **4.5 Fuses**

There are two fuses on the internal Power Distribution Board of the MICRO-6000 (Figure 2). Once removed and with the power switch off, a fuse can be checked visually and with an ohmmeter. A gap may be evident (with some discoloration) if the fuse needs replacing. This can be verified by a high resistance measurement (megaohms) with an ohmmeter. If fuse needs replacing, insert one of the supplied replacement fuses. If there are no replacement fuses available, consult the factory or they can be purchased from an electrical supply house. The F1 charger fuse is an eight amp SLO-BLO 5x20 mm and the F2 fuse is a four amp SLO-BLO 5x20 mm. Consult Appendix D.6 for fuse assignments.

## **5. TROUBLESHOOTING**

This section will NOT attempt to cover all possible problems that could be encountered in the course of Datalogger operations. Consult the factory if other problems arise or remain unresolved.

### ***Symptom: Cannot communicate with the Datalogger:***

- ✓ The USB Driver for the CR6 has not been installed on the host computer. See LoggerNet - Utilities - Device Config Utility.
- ✓ Verify the CR6 USB Driver has been properly installed.
- ✓ The wrong USB communication port is being selected in the LoggerNet Setup Screen (refer to Device Manager of PC for assigned COM Port). Consult the appropriate software manual for instructions on changing the communication port.
- ✓ The USB communication port on the host computer is defective. Verify the functioning and configuration of the COM port by using it with another USB device, such as a camera or cellular phone.
- ✓ The Datalogger Load Fuse (F2) on the Power Distribution Board is blown. Consult Section 4.5 for checking and/or replacement.

### ***Symptom: The system battery voltage and panel temperature read odd numbers:***

- ✓ The system battery could be low. Charge and check again (see Section 4, Battery Maintenance).
- ✓ A disruptive current loop may be operating as a result of improper grounding or excessive noise. Consult the factory for more information.

### ***Symptom: The internal battery measurement does not increase when charging:***

- ✓ The AC Regulated Charger may be damaged. Check the output pins of the adaptor with a voltmeter.
- ✓ The Charger fuse (F1) of the Power Distribution Board is blown. Consult Section 4.5 for checking and/or replacement.
- ✓ The internal battery is no good. Consult the factory.
- ✓ The Regulated Solar Panel may be damaged, obstructed or have poor sun exposure. Check the output pins of the adaptor with a voltmeter. Verify Solar Panel is not obstructed.

***Symptom: The Datalogger will not operate on external power:***

- ✓ The external voltage supply is below operating limits. If the external source is a battery, charge it. If it is a power supply, check the output with a voltmeter.
- ✓ Verify both Load and Charger Fuses on Power Distribution Board (Refer to Section 4.5).

***Symptom: Loss of Micro-6000 program and/or data:***

- ✓ The system has experienced a voltage dropout or surge which disrupted operations.
- ✓ The surge originated as a result of lightning. Install appropriate grounding. Install lightning protection devices on all incoming and outgoing lines (consult factory).
- ✓ Verify .CR6 Program is running on the Datalogger (See Appendix E).

***Symptom: Sensor readings show “NAN” or are unstable:***

- ✓ The wrong sensor type has been connected. Check the model number of the sensor against the requested sensor list.
- ✓ The cable(s) to the sensor(s) have been damaged permitting moisture and debris to enter the jacket. Wires may be shorted together. Inspect the cable and perform Ohm test to check for short circuits.
- ✓ If all sensors on a particular Multiplexer are erratic or returning “NAN” perhaps the Multiplexer or cable has been damaged. Inspect the cable. Try another cable to verify proper functioning.
- ✓ The sensor(s) have been damaged. For example, overrange on a vibrating wire sensor can cause erratic readings.
- ✓ There is an electrical noise source nearby. Move the sensor, cables, and Datalogger away from the noise source. Install grounding devices. Consult the factory.



## **APPENDIX A. SPECIFICATIONS**

### **A.1 Model 8600-2 Datalogger**

Analog Inputs	12 single-ended or 6 differential with $\pm 5000$ mV, $\pm 1000$ mV, $\pm 200$ mV ranges 24 bit ADC
Analog Outputs	$\pm 2.5$ V or $\pm 2.5$ mA ranges 12 bit DAC
Accuracy	$\pm(0.04\%$ of reading + 2 microvolts), 0-40 °C
Resolution	50 mV ( $\pm 200$ mV range, differential measurement, input reversal, 5 Hz $f_{NI}$ )
Static Frequency-Analyzed Vibrating Wire	12 V p-p 100-6000 Hz (Spectral analysis technique)
Accuracy	$\pm 0.013\%$ of reading
Resolution	0.001 Hz RMS
Thermistor Accuracy	$\pm 0.25\%$ of reading
Temperature Range	-40 to +80 °C
Battery	12 V, 7 Ah Gel Cell
LxWxH	502 x 461 x 263 mm

**Table 1 - 8600-2 Specifications**

### **A.2 CR6 Measurement and Control Module**

Please refer to Campbell Scientifics Specification for the CR6 Datalogger

[https://s.campbellsci.com/documents/us/product-brochures/s\\_cr6.pdf](https://s.campbellsci.com/documents/us/product-brochures/s_cr6.pdf)

### **A.3 Model 8032 Multiplexer**

Please refer to the GEOKON Model 8032 Multiplexer Manual.

[http://www.GEOKON.com/content/manuals/8032\\_Terminal\\_Board\\_and\\_Multiplexer.pdf](http://www.GEOKON.com/content/manuals/8032_Terminal_Board_and_Multiplexer.pdf)

## **APPENDIX B. SHIP LIST**

### **B.1 Hardware**

The following equipment is included with the system:

- External Power cable
- USB A Type Male to Male, one-meter length
- Ethernet 10/100 Base-T Crossover Cable, two-foot length
- Small regular screwdriver
- Three spare Slo-Blo fuses, four and eight amp
- AC Smart Regulated Charger Rain Proof

The following manuals are included:

- MICRO-6000 Instruction Manual
- Campbell Scientific Resource disk
- 8032 Multiplexer Instruction Manual (if Multiplexers provided)

Optional accessories:

- Cellular Phone Modem Install Kit with Start Guide (Modem Provided by Customer)
- Micro-SD memory Card
- Regulated Solar Panel with mounting hardware
- RF Modem with manuals (wireless Datalogger communication)
- Datalogger Starter CRBasic Program
- Custom CRBasic Programming
- WIFI Communications Modem
- RF Whip or High Gain Antennas with mounting hardware

Consult the factory for additional information on any of the optional accessories.

## **APPENDIX C. DATA STORAGE**

### **C.1 Data Storage**

Total Arrays of Data that can be stored per 16-channel Multiplexer. Each array contains all Data stored at each read interval. The 8600-2 has a single internal Multiplexer.

	<b>Total Arrays</b>
<b>1 Multiplexer Array Storage:</b>	49,6652

**Table 2 - Total Number of Arrays Available per Multiplexer**

### **C.2 Data Storage Example**

#### **C.2.1 Overwrite Times when Data is Stored Once a Minute**

	<b>Minutes</b>	<b>Hours</b>	<b>Days</b>	<b>Total Arrays</b>
<b>1 Multiplexer Overwrite Time:</b>	496,652	8,277	344	496,652

**Table 3 - Amount of Time Until Data Overwrite Occurs when Data is Stored Every 60 Seconds**

#### **C.2.2 Overwrite Times when Data is Stored Once an Hour**

	<b>Hours</b>	<b>Days</b>	<b>Years</b>	<b>Total Arrays</b>
<b>1 Multiplexer Overwrite Time:</b>	496,652	20,693	56.6	496,652

**Table 4 - Amount of Time Until Data Overwrite Occurs when Data is Stored Every 60 minutes**

#### **C.2.3 Overwrite Times when Data is Stored Once a Day**

	<b>Hours</b>	<b>Days</b>	<b>Years</b>	<b>Total Arrays</b>
<b>1 Multiplexer Overwrite Time:</b>	571,200	496,652	1,359.7	496,652

**Table 5 - Amount of Time Until Data Overwrite Occurs when Data is Stored Once per Day**

## **APPENDIX D. SYSTEM WIRING**

### **D.1 CR6 Wiring**

<b>CR6 Connections</b>	<b>Internal MUX 1 Interface Ribbon Cable</b>	<b>CR6 Power Cable</b>	<b>Description</b>
U1	Brown	NC	Vibrating Wire +
U2	Red	NC	Vibrating Wire -
U3	Orange	NC	Thermistor +
U4	Yellow	NC	Thermistor -
U5	Gray	NC	MUX Enable 1
C4	White	NC	MUX Clock
12V	Blue	NC	MUX 12 VDC
G	Violet	NC	Ground
AG	Black and Green	NC	Analog Ground
PWR IN 12V	NC	Red	CR6 12 VDC
PWR IN G	NC	Black	CR6 Power Ground

**Table 6 - CR6 Wiring**

**NOTE:** Ports U1 and U2 are used for Vibrating Wire when the 8600-2 is configured for 32 ea Vibrating Wire Gauges. U3 and U4 are used when the 8600-2 is configured for 32 ea Thermistors.

### **D.2 Charger Port Wiring**

<b>Pin</b>	<b>Description</b>	<b>Wire Color</b>
A	Unregulated Charger	Gray
B	Ground	Blue
C	Regulated Charger / External Battery	Violet

**Table 7 - Charger Port Wiring**

### **D.3 Unregulated Charger Wiring**

<b>Pin</b>	<b>Description</b>	<b>Wire Color</b>
A	Unregulated Charger	Red (Black Smooth)
B	Ground	Black (Black Rough)
C	No Contact	NC

**Table 8 - Unregulated Charger Wiring**

#### D.4 Regulated Charger (Default)

Pin	Description	Wire Color
A	No Contact	NC
B	Ground	Black(Black Rough)
C	Regulated Charger/External Battery	Red(Black Smooth)

Table 9 - Regulated Charger Default Wiring

#### D.5 External Power Cable

Pin	Description	Wire Color	Clip
A	No Connection	NC	No Connection
B	Ground	Black	Black
C	Battery+(12VDC)	Red	Red

Table 10 - External Power Cable Wiring

**NOTE:** Disconnecting the Internal Battery is recommended when powered by External Battery.

#### D.6 Fuse Designations for Power Distribution Board

Fuse	Description
F1	Eight Amp Charger/External Battery
F2	Four Amp Battery/Load

Table 11 - Fuses Designations for Power Distribution Board

## **APPENDIX E. LOGGNET QUICK START GUIDE**

### **E.1 Overview**

Campbell Scientific’s LoggerNet Software is used to communicate with the Datalogger, program user specific settings and collect Data stored in the Datalogger memory. LoggerNet is designed to be used with GEOKON Micro-6000 Dataloggers reading Vibrating Wire and MEMS tilt sensors; other configurations and sensor outputs are available upon request. Upon request GEOKON provides the user with a generic Start Program to simplify acquiring Data without the need to be proficient in Campbell Scientific CRBasic programming code. The Start Program(s) will be preconfigured with a default Scan Interval and will store Raw Units by default. Each Start Program will have two associated files on the factory supplied USB flash drive. The first is the Main CRBasic program (.CR6) and includes all programming code required to read and store Data according to the Datalogger configuration. The Main CRBasic program does not require modification by the user in most cases. The second file is the Include (.DLD) text file and is used by the Main program to import user specific parameters. The Include file allows program parameters such as the Scan Interval, Zero Readings, Linear Gauge Factors, Data File Header Labels and Temperature Correction factors to be modified by the user.

### **E.2 Getting Started**

#### **E.2.1 Program Files**

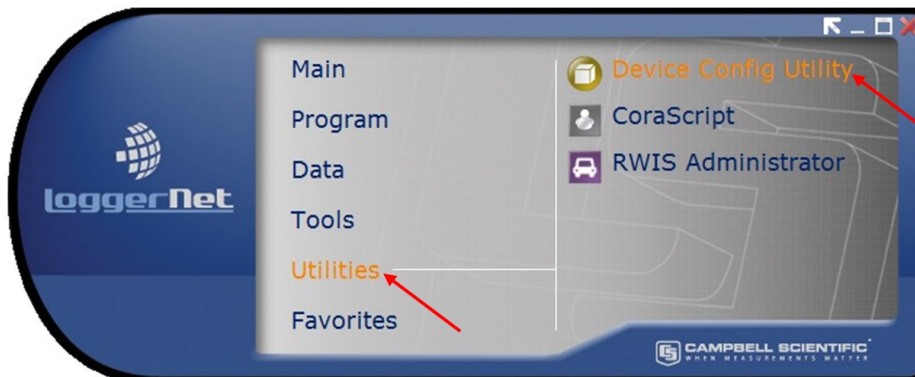
After installing LoggerNet (must be the most recent version), the CRBasic program files are located on the GEOKON USB Thumb Drive. The file types are “.DLD” and “.CR6”, these files should first be copied to the end users computer in C:\Campbellsci\CRBasicEditor.

#### **E.2.2 Connection Setup**

The Launch Menu provides a list of all the categories on the LoggerNet toolbar. Hovering over a category will display a list of applications related to that category.

**Prior to the first time any computer connects to a Micro-6000/CR6 Datalogger via USB the USB drivers must be installed. Device Config must be Version 2.10 +**

With the Launch Menu open, hover over “Utilities” and press “Device Config Utility” from the resulting list of applications.



**Figure 9 - Launch Menu, Device Config Utility**

In Device Type, Select “CR6” from the datalogger group. Within the CR6 pane use the “install the USB driver” hyperlink to install the USB drivers. Follow the steps in the Device Driver Installation Wizard.

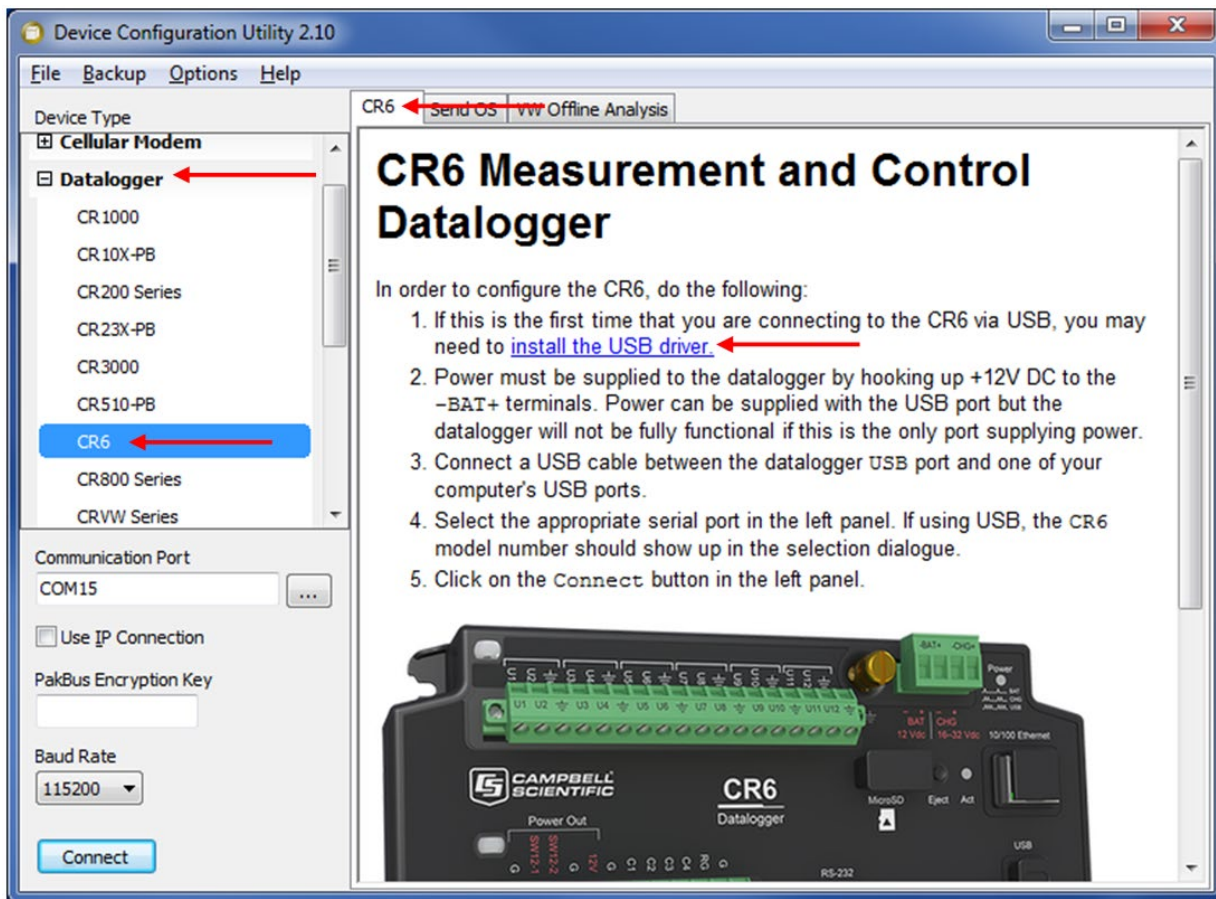


Figure 10 - Install Device Driver

With the Launch Menu open, hover over “Main” and press “Setup” from the resulting list of applications.

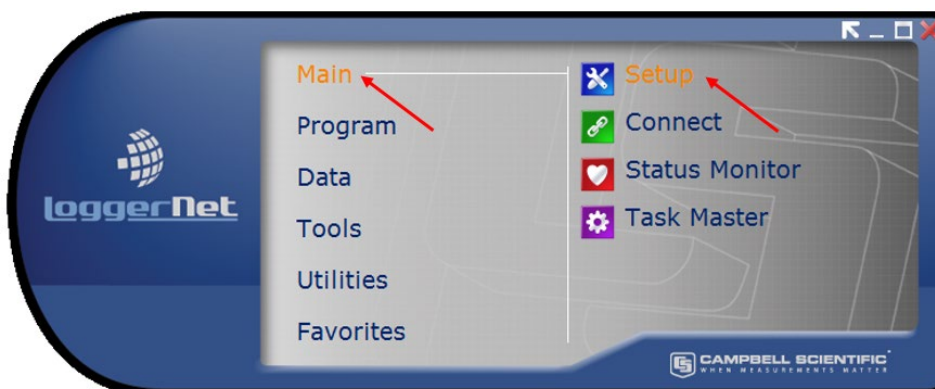


Figure 11 - Launch Menu, Setup

By default, the EZ View of the Setup Screen is displayed. To change the viewing method, press the “Std View” icon at the top right of the Setup Screen. This Quick Start will show the “Std View” of the Setup Screen.



To add a communication port, press “Add Root” button.



Figure 12 - Add Communications Port (Root)

Each Micro-6000 Datalogger will communicate via USB. Select connection type “ComPort”, “PakBusPort (Other Loggers)”, “CR6Series and press “Close”.

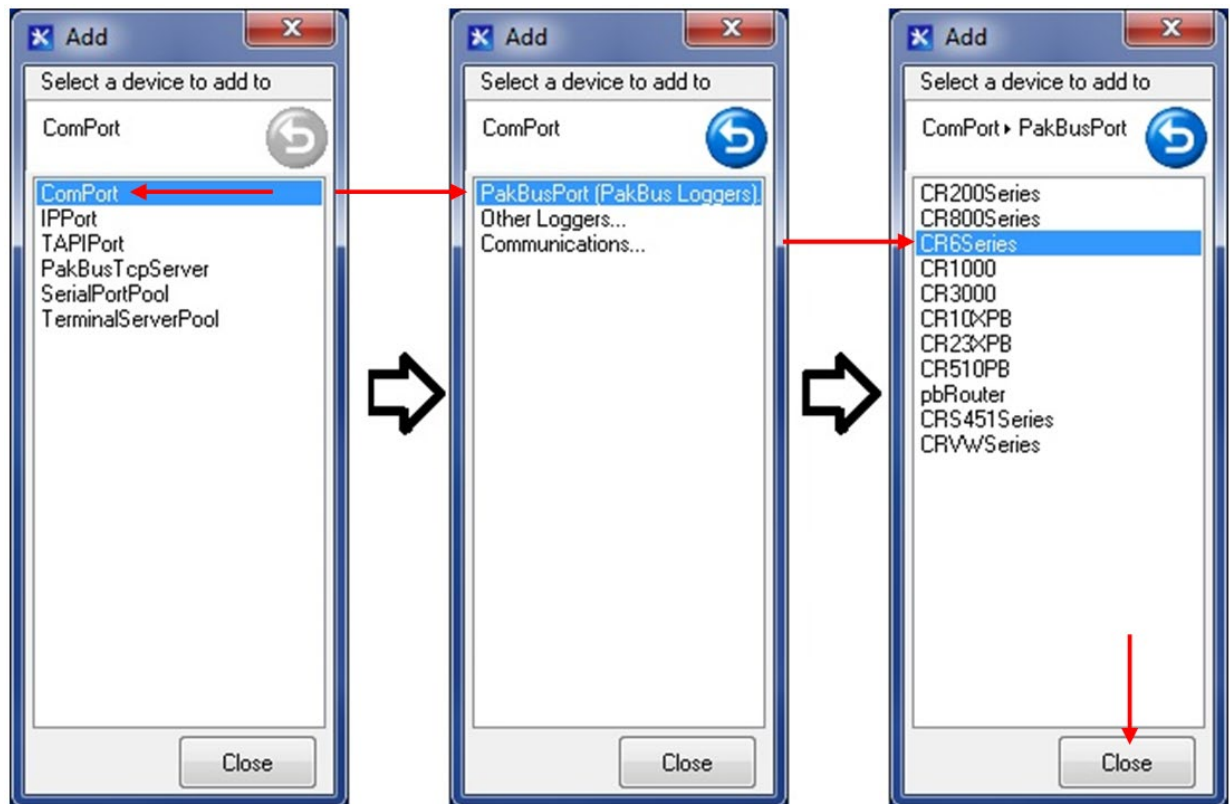


Figure 13 - Select Device to Add

Select “ComPort” under the “Network Map”, select the communications port to connect to the Datalogger in “ComPort Connection”.

CONDITIONAL NOTE: IT MAY BE NECESSARY TO PRESS “COMMUNICATIONS ENABLED” TO OPEN THE COMMUNICATIONS PORT.

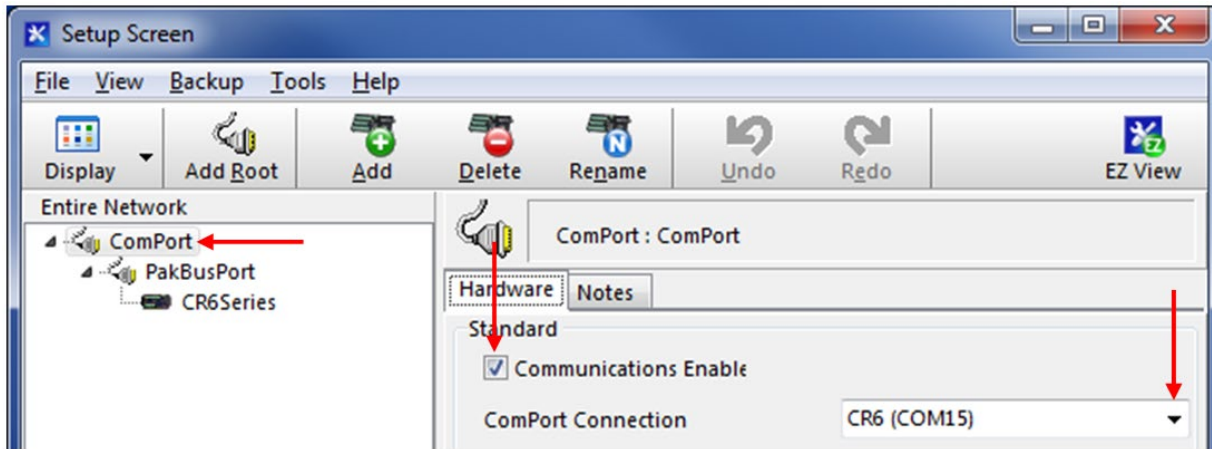


Figure 14 - Select Communications Port

**COM NUMBERS VARY WITH COMPUTER, USB DEVICES AND SERIAL ADAPTERS. REFER TO THE COMPUTER DEVICE MANAGER IF UNSURE OF WHICH COM NUMBER TO USE.**

Select “PakBusPort” under the “Network Map”, in “Maximum Baud Rate” for direct connection to the Datalogger select “115200”.

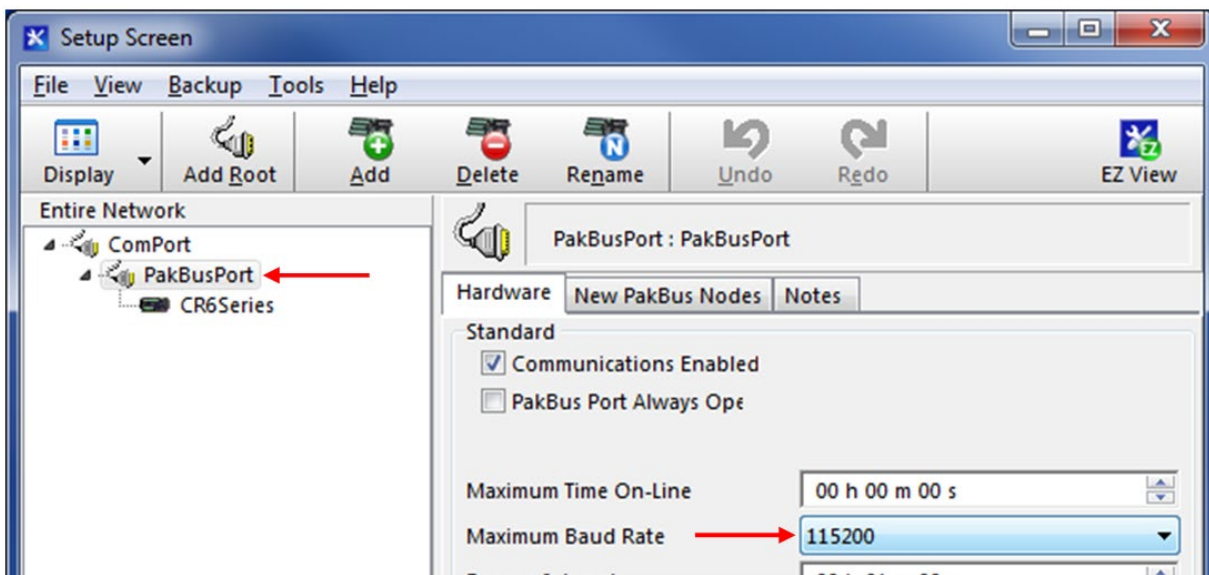


Figure 15 - Select Maximum Baud Rate

**WHEN FINISHED, PRESS THE “APPLY” BUTTON AT THE BOTTOM LEFT OF THE SETUP SCREEN TO SAVE ALL SETTINGS.**

### E.2.3 Connecting to the Datalogger

With the LoggerNet Launch Menu open, hover over “Main” and press “Connect”.

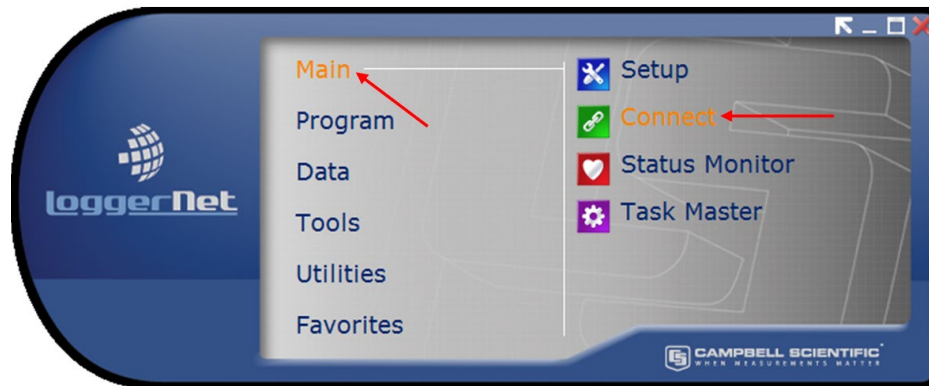


Figure 16 - Launch Menu, Connect

Select the Datalogger to communicate with under “Stations” and press the “Connect” button.

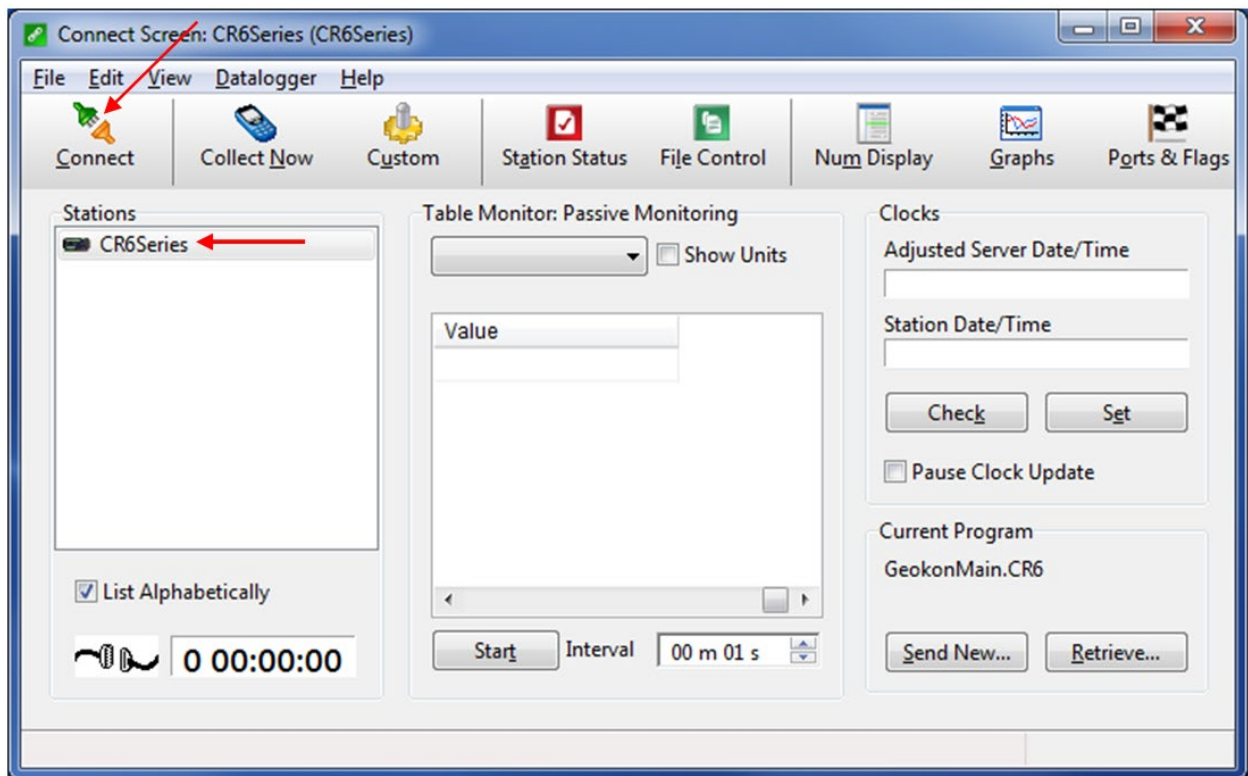


Figure 17 - Connect to the CR6

### E.3 Modifying the Datalogger Program

Navigate to the Include (.DLD) file on the end user's computer C:\Campbellsci\CRBasicEditor. Optional changes to Scan Interval, Zero Readings, Gauge Factors and Alias names can be made by opening the Include (.DLD) file with Notepad. Each Datalogger configuration has a unique Include (.DLD) file.

**WARNING: ONLY CHANGE VALUES AFTER THE “=” SIGN.**

#### E.3.1 Scan Interval

The number entered in the Scan Interval section determines how often the Datalogger will read the gauges and store data. The Scan Interval is in seconds.

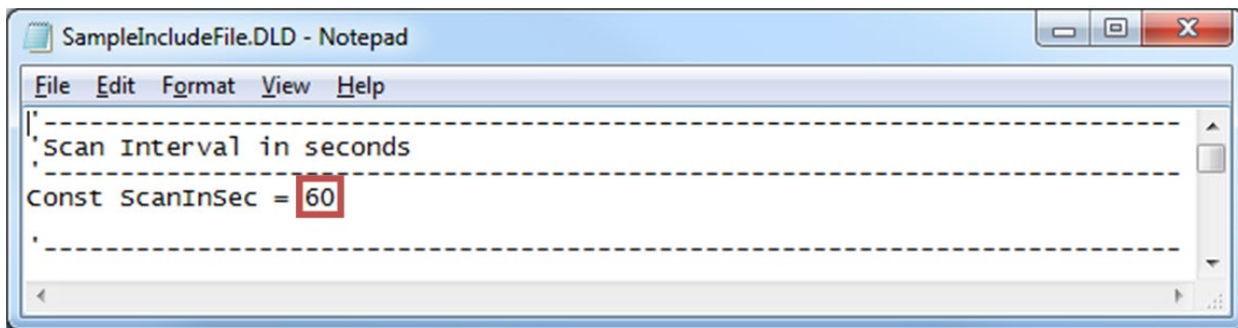


Figure 18 - Set the Scan Interval

#### E.3.2 Zero Readings and Gauge Factors

Default values for Zero Readings are 0 and Linear Gauge Factors are 1. The default settings read in Digits for Vibrating Wire sensors and Volts for MEMS tilt sensors. Zero Readings and Gauge Factors can be added if the user requires the Datalogger to store engineering units.

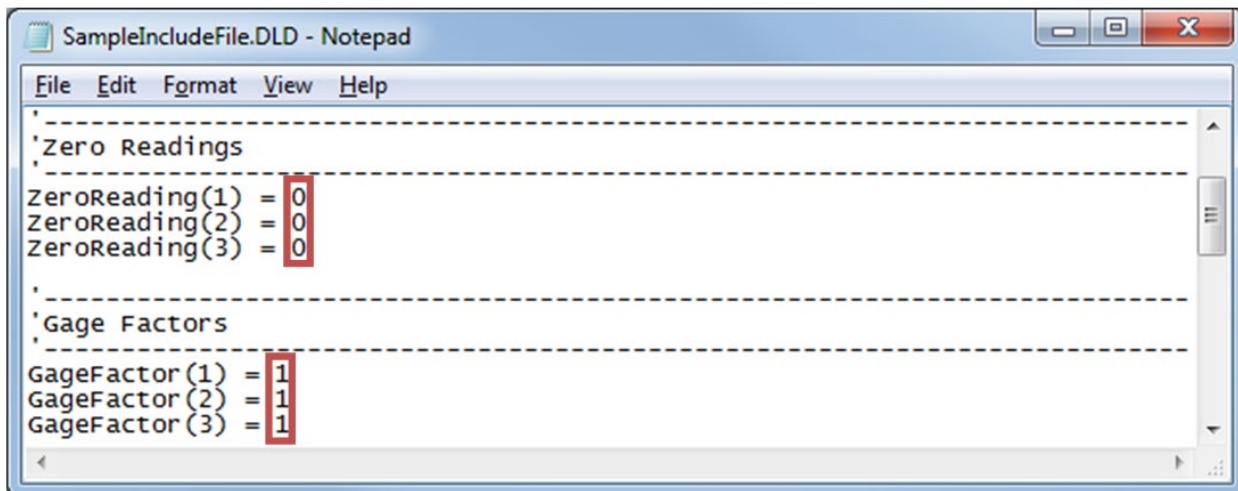
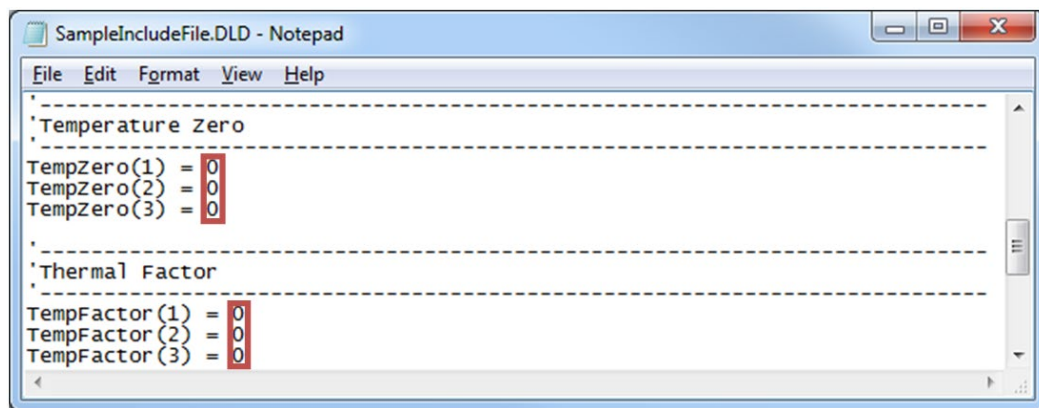


Figure 19 - Set Zero Readings and Gauge Factors

### E.3.3 Temperature Zero Readings and Thermal Factors

NOTE: TEMPERATURE ZERO AND THERMAL FACTORS ARE USED FOR TEMPERATURE CORRECTION. TEMPERATURE CORRECTION CAN BE USED TO COMPENSATE FOR CHANGES IN A GAUGE'S READINGS DUE TO TEMPERATURE CHANGE. TEMPERATURE EFFECT ON READINGS VARIES ON DIFFERENT MODELS OF GAUGES AND TEMPERATURE CORRECTION IS OFTEN NOT REQUIRED. DEPENDING ON THE GAUGE MODEL, TEMPERATURE CORRECTION MAY NOT BE AVAILABLE; SOME GAUGE MODELS REQUIRE A DIFFERENT FORMULA TO COMPENSATE. TEMPERATURE CORRECTION IS COMMENTED OUT IN THE MAIN PROGRAM FILE BY DEFAULT.

Default values for Temperature Zero Readings and Thermal Factors are 0. Temperature Zero Readings and Thermal Factors can be added if the user requires the Datalogger to use temperature compensation.



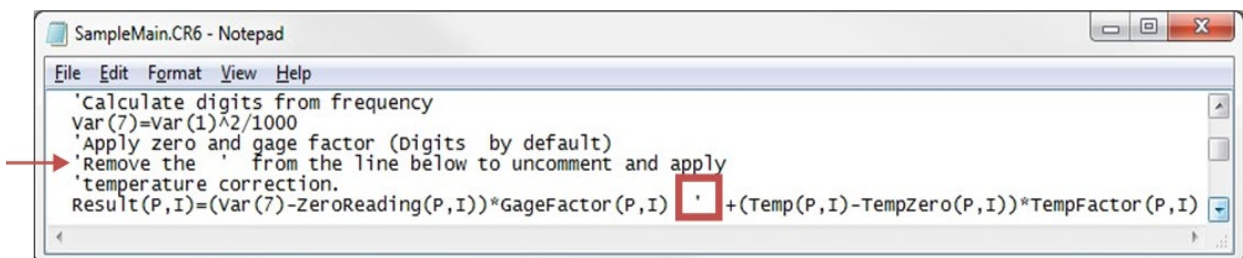
```

-----
'Temperature Zero
-----
TempZero(1) = 0
TempZero(2) = 0
TempZero(3) = 0
-----
'Thermal Factor
-----
TempFactor(1) = 0
TempFactor(2) = 0
TempFactor(3) = 0

```

Figure 20 - Set Temperature Zero and Thermal Factor

Navigate to the Main (.CR6) file C:\Campbellsci\CRBasicEditor. Open the Main (.CR6) file with notepad and uncomment the line specified in the code for all model gauges that temperature correction is required.



```

'Calculate digits from frequency
var(7)=var(1)^2/1000
'Apply zero and gage factor (Digits by default)
'Remove the ' from the line below to uncomment and apply
'temperature correction.
Result(P,I)=(var(7)-ZeroReading(P,I))*GageFactor(P,I)'+(Temp(P,I)-TempZero(P,I))*TempFactor(P,I)

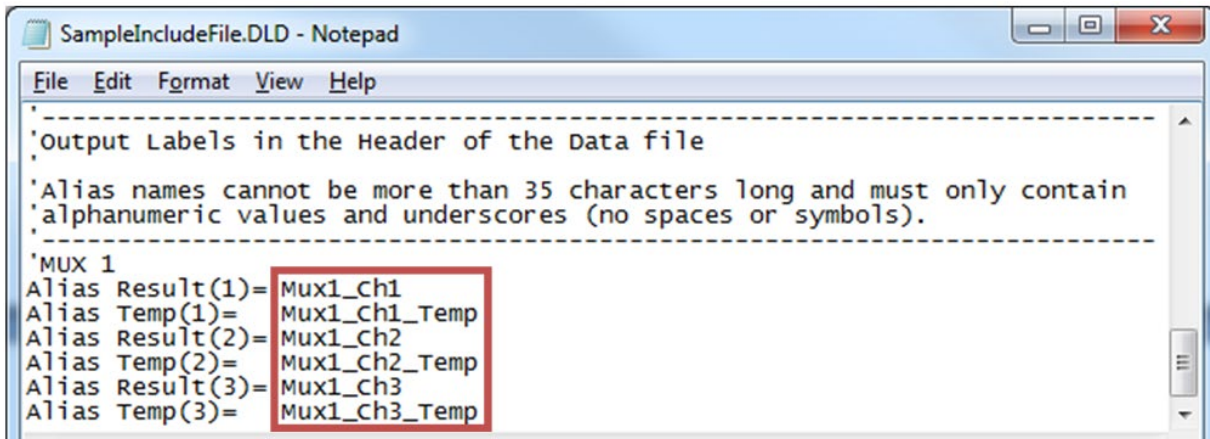
```

Figure 21 - Uncomment Specified Line

### E.3.4 Output Labels

Default Alias names correspond with the Direct or Multiplexer channel of each gauge and are displayed in the Header of the Data file. Alias names can be modified by the user.

**WARNINGS: ALIAS NAMES CANNOT BE MORE THAN 35 CHARACTERS LONG AND MUST ONLY CONTAIN ALPHANUMERIC VALUES AND UNDERSCORES (NO SPACES OR SYMBOLS). ALIAS NAMES MUST BEGIN WITH AN ALPHA CHARACTER**



```

-----
output Labels in the Header of the Data file
Alias names cannot be more than 35 characters long and must only contain
alphanumeric values and underscores (no spaces or symbols).
-----
MUX 1
Alias Result(1)= Mux1_Ch1
Alias Temp(1)= Mux1_Ch1_Temp
Alias Result(2)= Mux1_Ch2
Alias Temp(2)= Mux1_Ch2_Temp
Alias Result(3)= Mux1_Ch3
Alias Temp(3)= Mux1_Ch3_Temp

```

Figure 22 - Alias Names

**SAVE THE INCLUDE FILE IF MODIFIED.**

## E.4 Uploading Files

The Include.DLD file must be saved when modified. After modification, the Include.DLD must be sent to the Datalogger using the File Control Menu in the LoggerNet Connect Screen. The Main (.CR6) program file must be sent to the Datalogger each time the Include.DLD file is updated.

### E.4.1 Sending the Include file (.DLD)

From the “Connect Screen” press “File Control” and press “Send” to transfer the Include (.DLD) file to the Datalogger.

NOTE: EACH DATALOGGER HAS A UNIQUE INCLUDE (.DLD) AND MAIN (.CR6) FILE

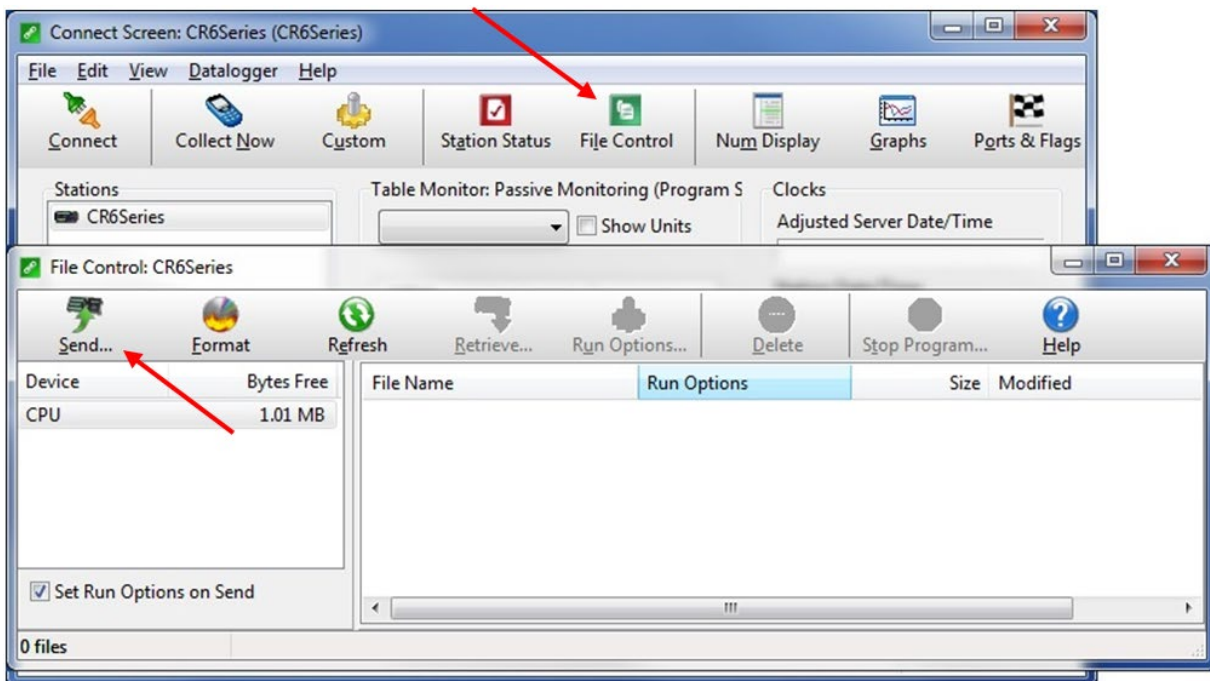


Figure 23 - Transfer File to Datalogger

Select DLD file type to make the Include (.DLD) file visible in C:\Campbellsci\CRBasicEditor.

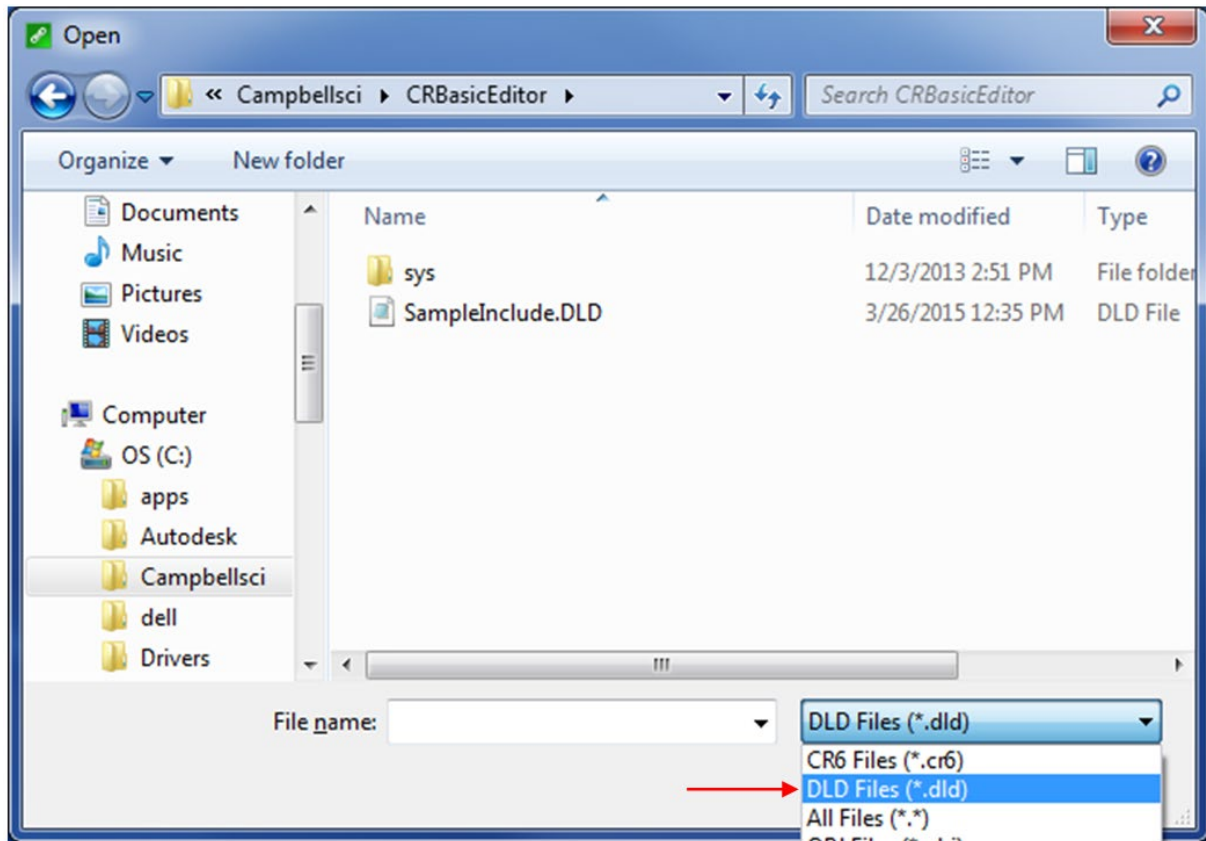


Figure 24 - Select DLD File Type

Uncheck “Run Now”, the Include (.DLD) file cannot run the Datalogger.

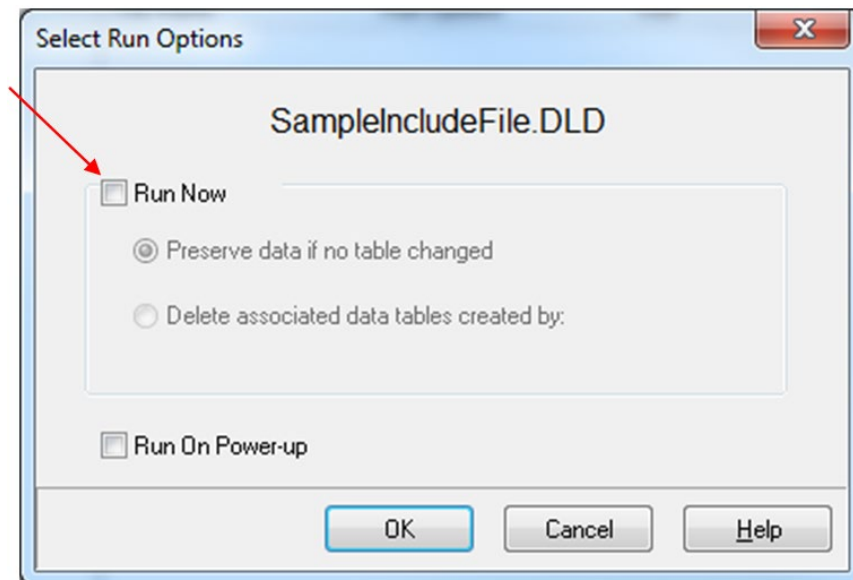


Figure 25 - Uncheck “Run Now”

## E.4.2 Sending the Main program file (.CR6)

To send the Main (.CR6) CRBasic Program from the “Connect Screen” press “Send” and select the Main (.CR6) program file in C:\Campbellsci\CRBasicEditor.

NOTE: EACH DATALOGGER HAS A UNIQUE INCLUDE (.DLD) AND MAIN (.CR6) FILE

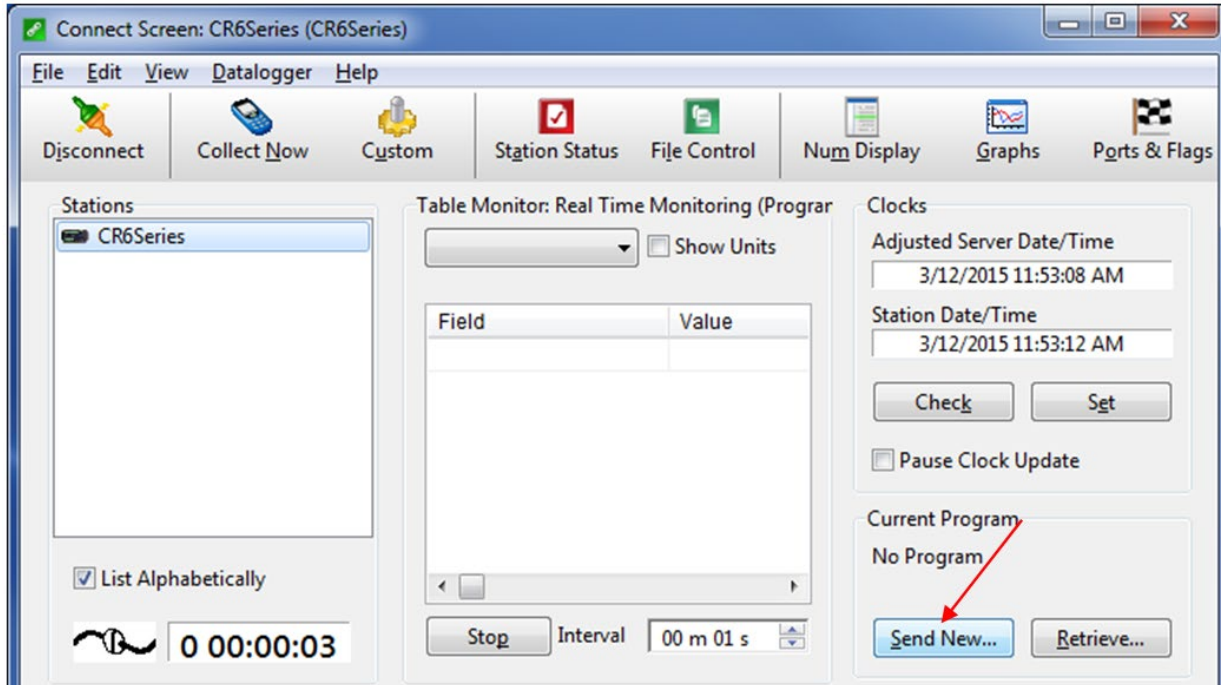


Figure 26 - Send the Main CRBasic Program File

When sending the Main (.CR6) program file through the “Connect Screen” the program runs automatically.

## E.5 Data Handling

### E.5.1 Data Collection Configuration

With the Launch Menu open, hover over “Main” and press “Setup” from the resulting list of applications.

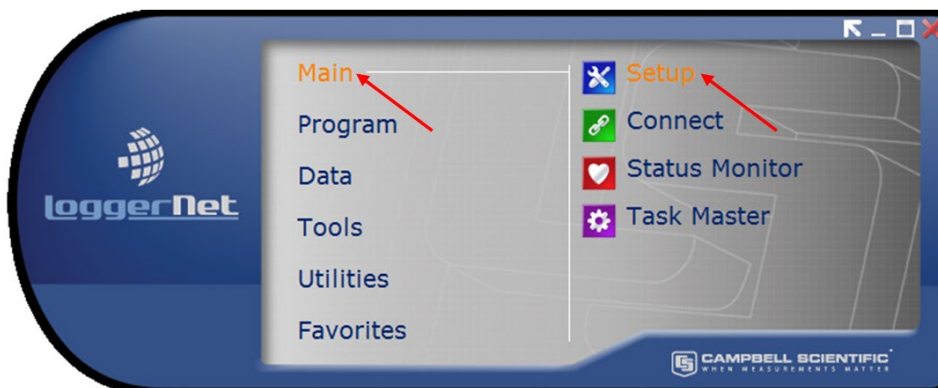


Figure 27 - Launch Menu, Setup



Select the Datalogger “CR6Series”, “Data Files” tab then select “Table1”. Dataloggers can be renamed by pressing “Rename” button. Renaming the Datalogger affects the name of the Data file. “Output File Name” option allows changing the file name, where to collect and store the Data file. “File Output Option” determines whether new Data collected is appended into one file, overwrites old Data, or creates a new file every time Data is collected.

COLLECTED DATA TABLES ARE SIGNIFIED WITH A GREEN CHECK MARK.

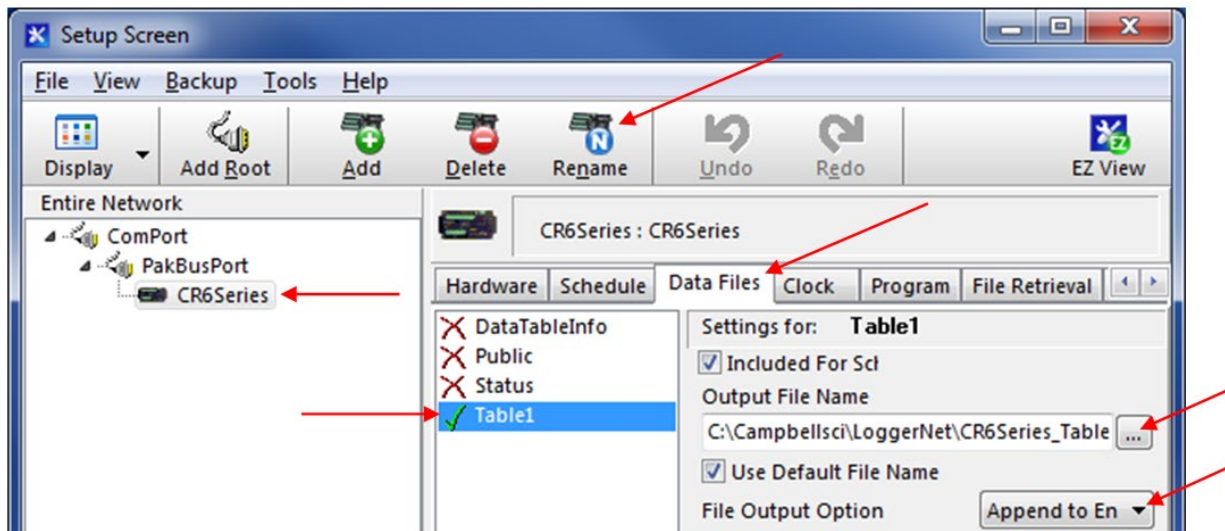


Figure 28 - Data Files Tab

WHEN FINISHED, PRESS THE “APPLY” BUTTON AT THE BOTTOM LEFT OF THE SETUP SCREEN TO SAVE ALL SETTINGS.

### E.5.2 Live Monitoring

With the LoggerNet Launch Menu open, hover over “Main” and press “Connect”.

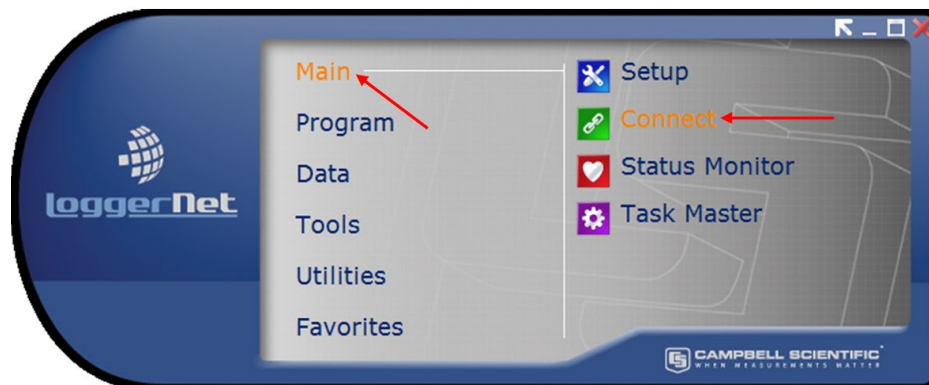


Figure 29 - Launch Menu, Connect

Once the program is running, most current readings can be viewed under “Table1” of the “Table Monitor” and “Num Display”. “Graphs” can also be used to view live and historical Data.

CONDITIONAL NOTE: IT MAY BE NECESSARY TO START MONITORING BY PRESSING “START”.

If unexpected “NAN” readings appear, refer to Section 5 (Troubleshooting).

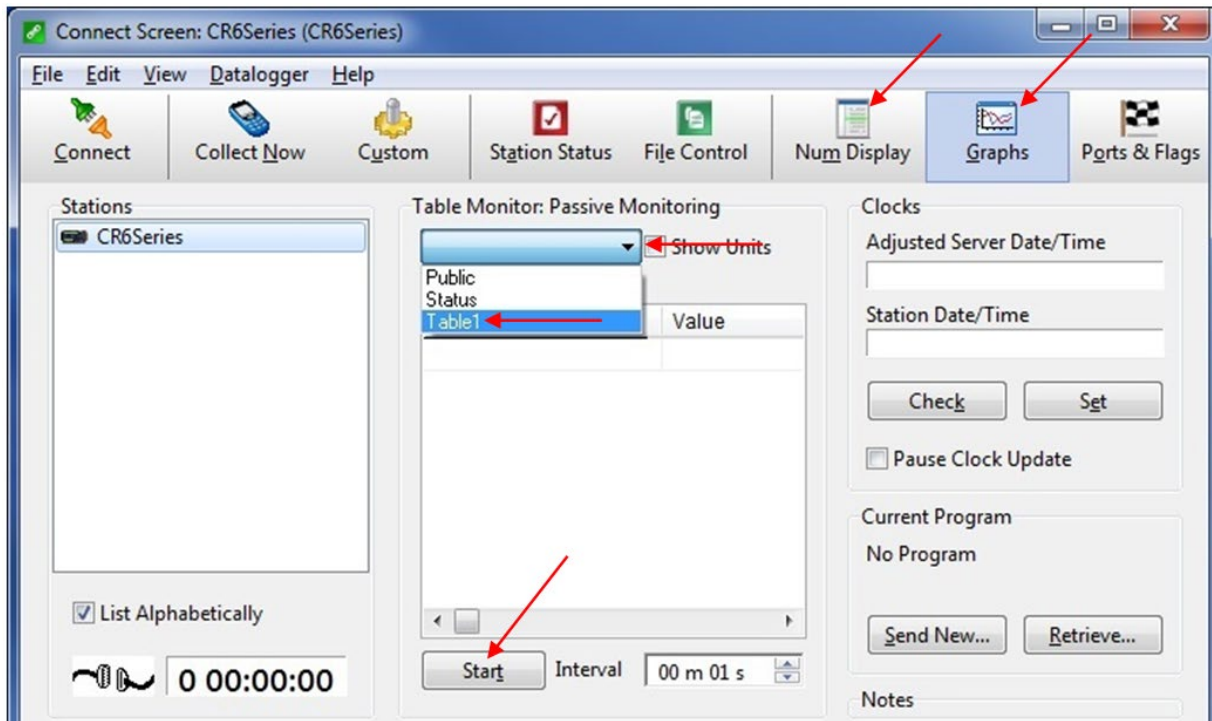


Figure 30 - Live Monitoring

### E.5.3 Collecting Data

Pressing “Collect Now” collects and stores Data on the computer. After collecting Data a “Data Collection Results” screen will open.

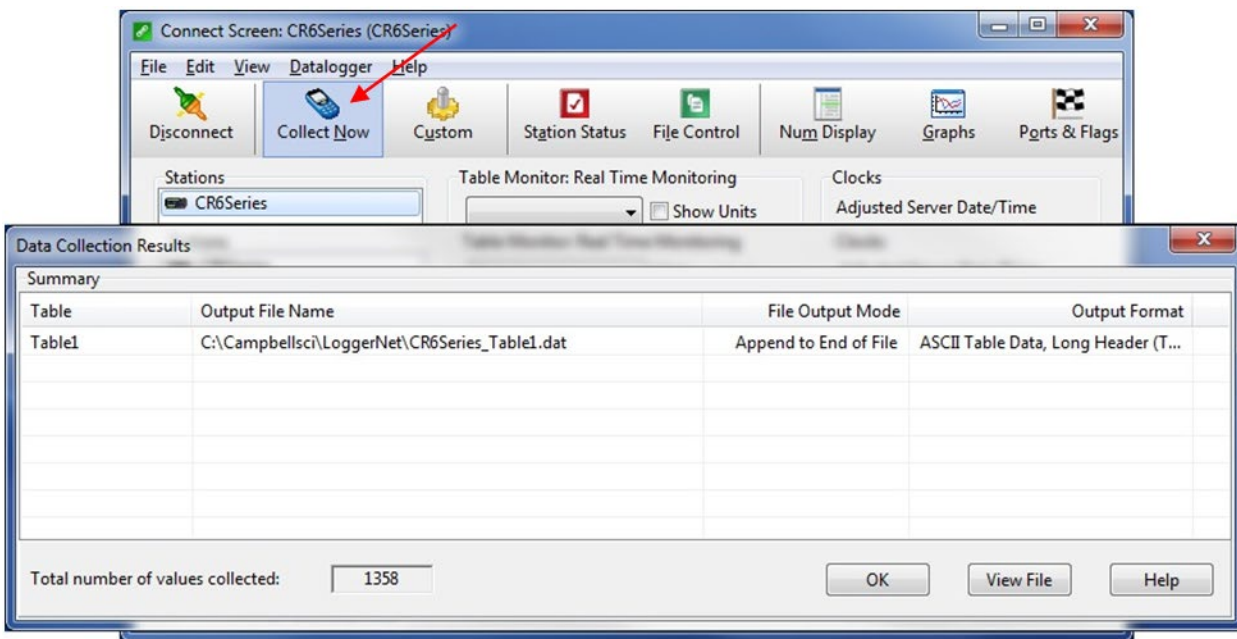


Figure 31 - Collecting Data

**PLEASE SEE LOGGNET MANUAL FOR MORE SPECIFIC DETAILS REGARDING USE OF THE SOFTWARE.**

## **APPENDIX F. EXCERPTS FROM THE 8032 MULTIPLEXER MANUAL**

The following Appendix includes excerpts from the Model 8032 Multiplexer manual that apply to the Micro-6000. A complete version of the Model 8032 Multiplexer Manual can be found at [WWW.GEOKON.COM](http://WWW.GEOKON.COM).

### **F.1 Theory of Operation**

The Model 8032 Multiplexer expands the number of channels that can be read by the MICRO-6000 Datalogger. Channel switching is accomplished by mechanical relays mounted on the underside of the circuit board and the transducer connections are accomplished by friction locking spring-loaded terminals mounted on the top side of the circuit board.

To protect against lightning or EMI/RFI induced transients, each channel is protected by an integrated lightning protection system, incorporating 230V tripolar plasma surge arrestors, 150V bipolar plasma surge arrestors, 10uH inductors and 16V transient voltage protection diodes. See Appendix A for complete specifications on these components.

The multiplexer is powered by a nominal 12 VDC supply. Two control lines (RESET and CLOCK) determine how channel selection is accomplished. Two schemes are supported - one when connected to the GK-403 Vibrating Wire Readout Box and the other when connected to Micro-6000 Datalogger.

Two switching configurations are supported, 16-channels of four conductors (Figure 32) or 32-channels of two conductors (Figure 33). The 16-channel, four wire switching configuration is typically used to multiplex four wire sensors such as resistance strain gauge load cells. It is also used to switch connections for instruments which have more than one sensor integral to them, such as vibrating wire pressure transducers with an integral thermistor for measuring temperature. The 32-channel two wire switching configuration is typically used to multiplex two wire sensors such as a vibrating wire pressure transducers, thermistors or thermocouples.

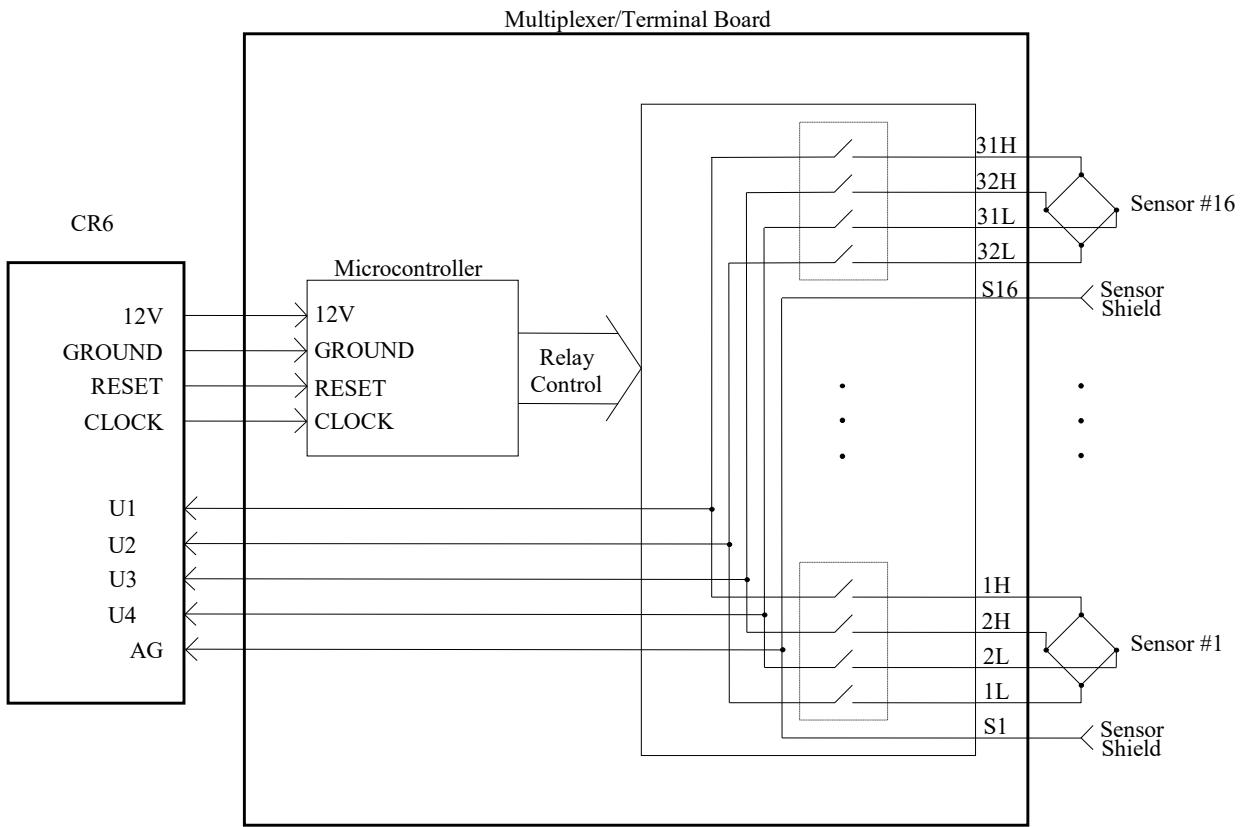


Figure 32 - 16-Channel Switching Block Diagram

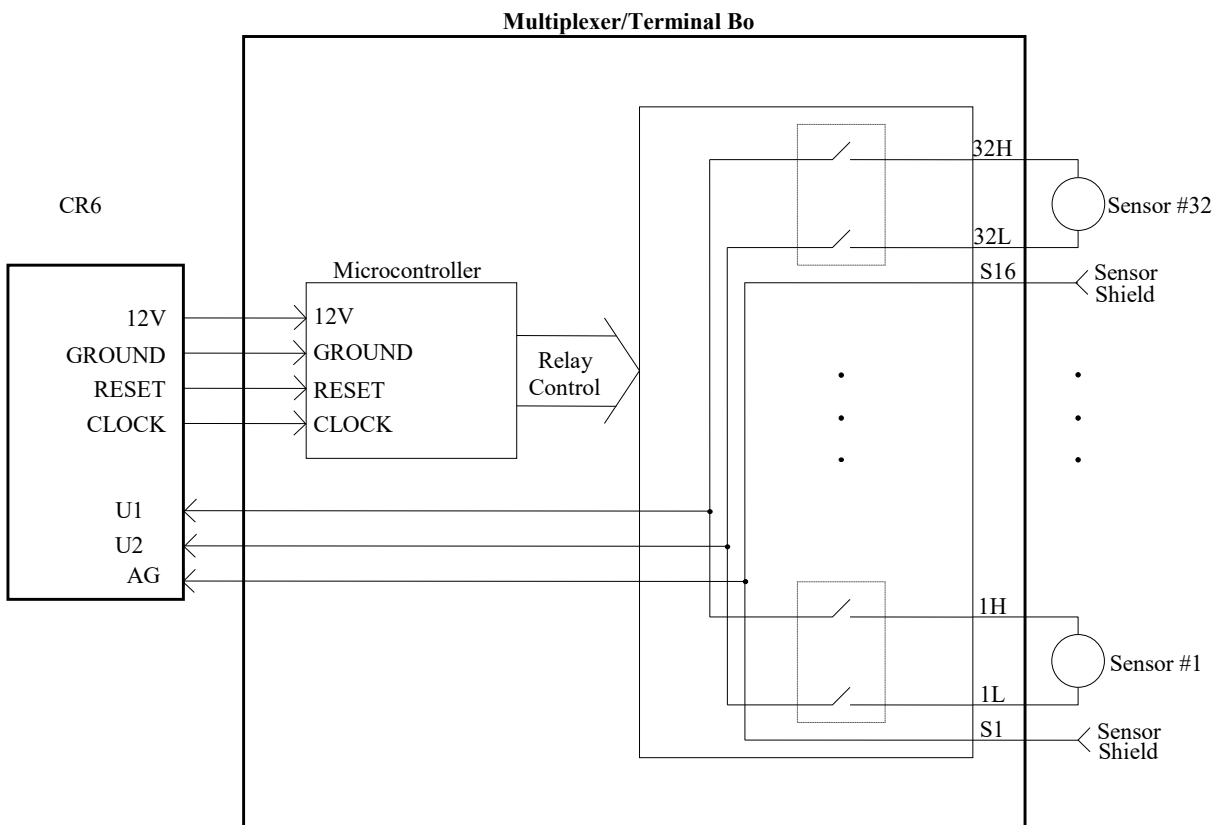


Figure 33 - 32-Channel Switching Block Diagram

For the 8032C, these configurations are set by a Dipswitch on the top side of the circuit board. A second Dipswitch selects whether the 8032C is being used with a Datalogger or GK-403 Readout Box.

Position one the DIP switch SW1 is used for switching between 16 and 32-channel operation. Switch 1 ON = 32-channel; Switch 1 OFF = 16-channel. In Figure 34, 32-channel mode is chosen:

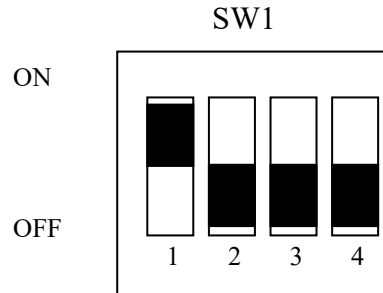


Figure 34 - 16 or 32-Channel Selection

The DIP switch SW2 is used for switching between a GK-403 or Datalogger application. “DATALOGGER” is the default SW2 position, as shown in Figure 35.

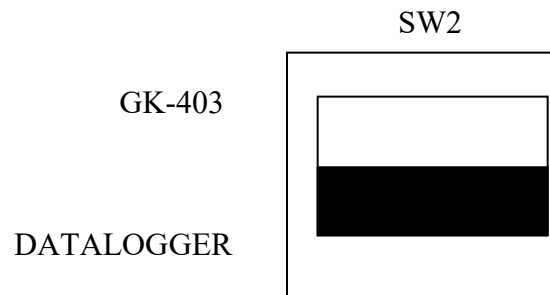
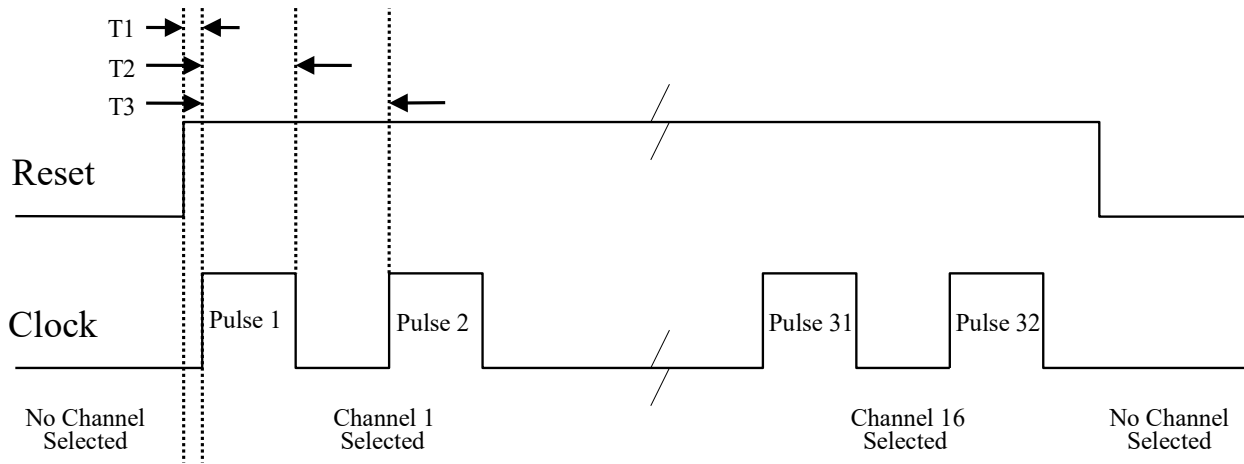


Figure 35 - GK-403/Datalogger Selection

## F.2 MICRO-6000 Mode of Operation

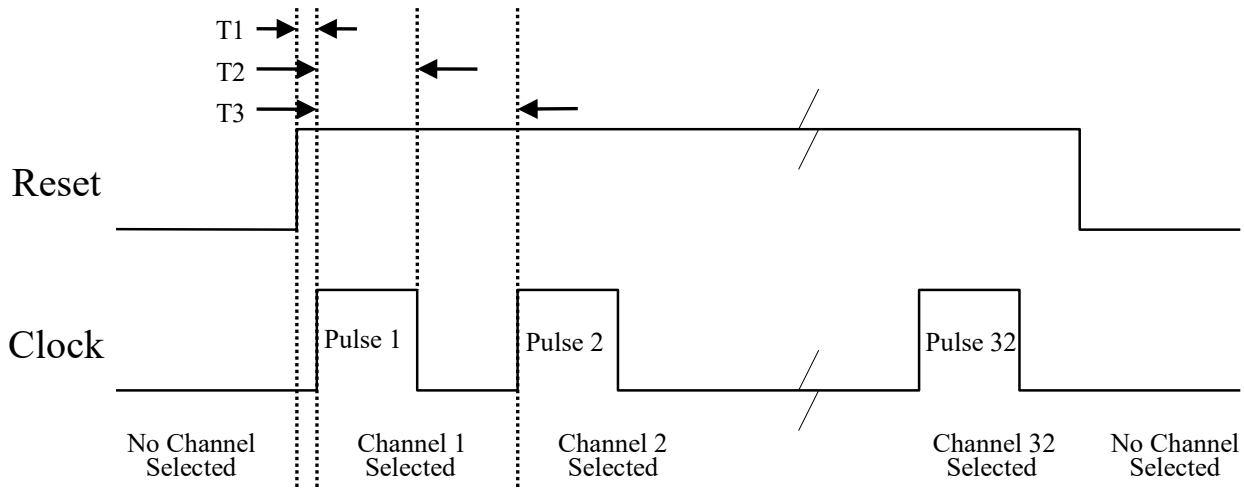
The MICRO-6000 (which utilizes a CR6 controller, manufactured by Campbell Scientific, Inc. of Logan, Utah) mode of operation uses two control lines to operate the multiplexer. The RESET line enables the multiplexer and activates the Micro-6000 mode of clocking. Pulses received on the CLOCK line sequentially increment the channels while the RESET line is held high. See the timing diagram below.

The CLOCK line sequentially advances the channels beginning with channel 1. Note the timing diagrams below for 16 and 32-channel switching, respectively.



Timing: T1 = 50 mSec(min.)  
 T2 = 2 mSec(min)  
 T3 = 2 mSec(min)

**Figure 36 - 16-Channel MICRO-6000 Channel Selection Timing**



Timing: T1 = 50 mSec (min)  
 T2 = 2 mSec (min)  
 T3 = 2 mSec (min)

**Figure 37 - 32-Channel MICRO-6000 Channel Selection Timing**



Figure 38 depicts the terminal board to which gauge connections are made. If the terminal board is equipped with manual switches, connectors J1 and J2 will have ribbon cables that are connected to the switch boards.

Terminal Blocks T1/2 to T31/32 are for the gauge connections.

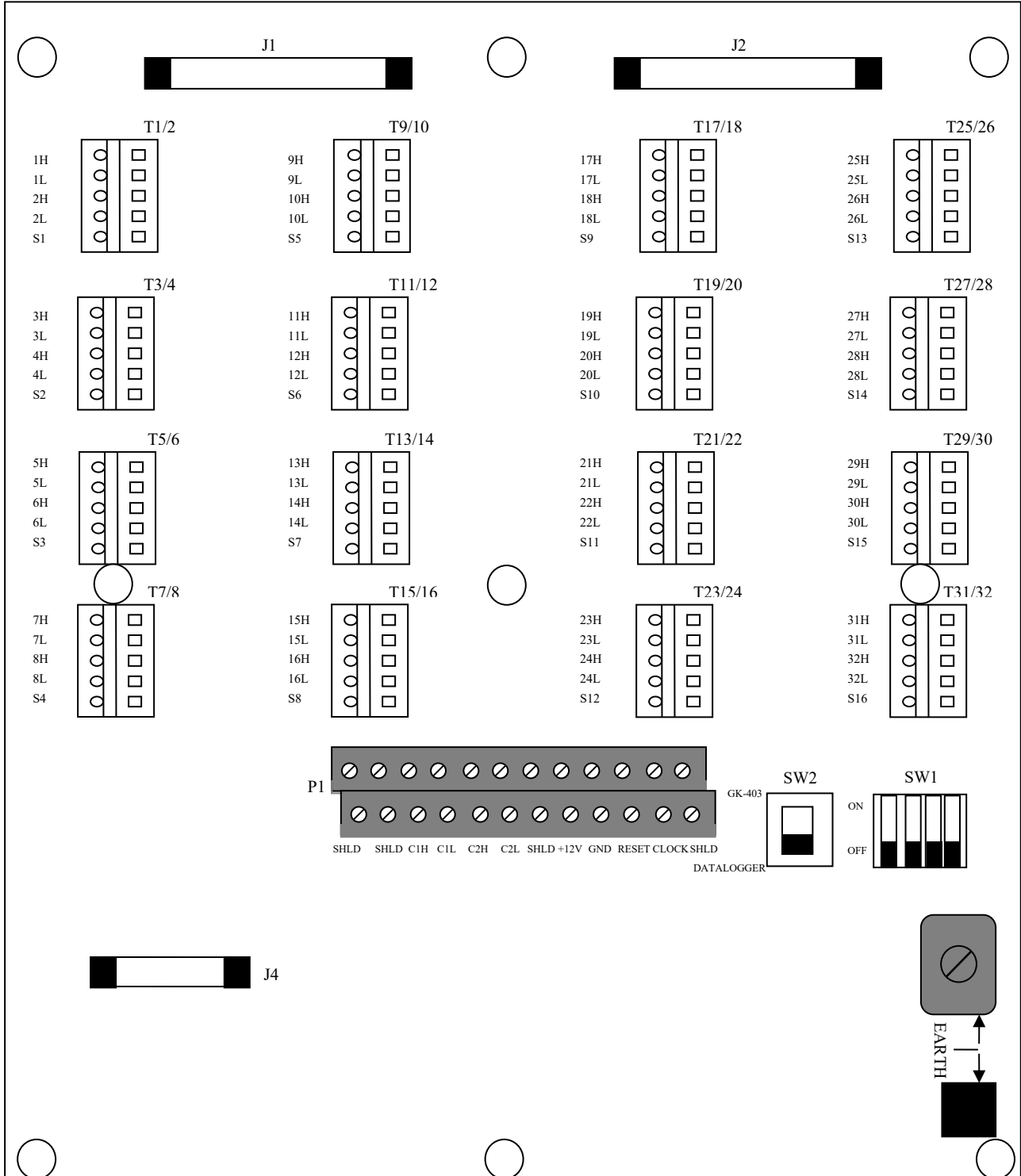


Figure 38 - Terminal Board Layout



### F.3.2 Connector and Cable Wiring

J4	Inside Color	10 Pin Bendix	Description	8032-5 (TAN) Cable Wire Color
1	Brown	A	COM HI 1	White
2	Red	B	COM LO 1	White's Black
3	Orange	C	COM HI 2 ( 16-channel)	Red
4	Yellow	D	COM LO 2 ( 16-channel)	Red's Black
5	Green	K	Analog Ground	Shield Drain Wires – all pairs plus overall
6	Blue	F	+12 Volt Power	Yellow
7	Purple	G	Power Ground	Yellow's Black
8	Grey	H	RESET (DATALOGGER) SENSE (GK-403)	Green
9	White	J	CLOCK	Green's Black
10		E	No Connection	Blue and Blue's Black (unused)

Table 14 - J4 (I/O) Connector

P1 Terminal	Label	Description
1,2	SHLD	SHIELD
3,4	SHLD	SHIELD
5,6	C1H	COM HI 1
7,8	C1L	COM LO 1
9,10	C2H	COM HI 2 ( 16-channel)
11,12	C2L	COM LO 2 ( 16-channel)
13,14	SHLD	SHIELD
15,16	+12V	+12 Volt Power
17,18	GND	Power Ground
19,20	RESET	RESET
21,22	CLOCK	CLOCK
23,24	SHLD	SHIELD

Table 15 - P1 (I/O) Connector

**Note:** P1 is a “stacking” type connector. Odd number terminals are read left to right on the bottom row. Even numbered terminals are read left to right on the top row.

### F.3.3 Model 8032-27 and Load Cell Wiring

Connect the “common” VW- conductor from the load cell to the 8032-27 by lifting up on the orange tab located on the opposite side of the six black conductors, inserting the common conductor fully into the 8032-27 (Figure 39), and then pushing down on the orange tab until it snaps into place. Refer to Table 16 to identify which conductor carries the common VW- signal.

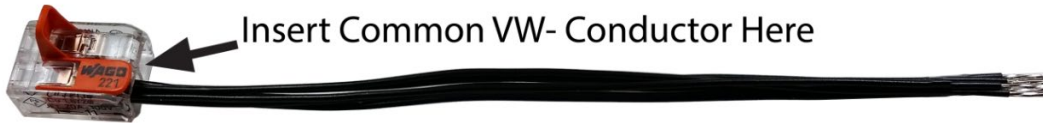


Figure 39 - Model 8032-27 Jumper Wire Assembly

10 pin Bendix PT06A-12-10P	Function	3 Gauge VW Load Cell, Purple Cable	4 Gauge VW Load Cell, Purple Cable	6 Gauge VW Load Cell, Orange Cable
H	Common	White's Black*	Green	Blue
* White's black and Green wires are switched on GEOKON 3 gauge VW load cells prior to serial number 3313.				

Table 16 -Common Conductor Chart

Table 17 details the connections between the load cell and 8032-27 with the multiplexer board.

Multiplexer Board	Vibrating Wire with Thermistor
1H	VW Sensor #1
1L	8032-27
2H	Thermistor
2L	Thermistor
S1	Shield Drain Wire
3H	VW Sensor #2
3L	8032-27
4H	-
4L	-
S2	-
5H	VW Sensor #3
5L	8032-27
6H	-
6L	-
S3	-
•	•
•	•
•	•
11H	VW Sensor #6
11L	8032-7
12H	-
12L	-
S6	-

Table 17 - Standard VW Load Cell Wiring When Using 8032-27

## F.4 Troubleshooting

Below are some commonly experienced problems along with possible remedial action. Contact the factory if any problem remains unresolved or additional help is required.

***Symptom: A particular channel on the multiplexer appears to be malfunctioning:***

- ✓ Check sensor connections on the terminal board. Clean if corrosion exists.
- ✓ Try moving the sensor wired to the suspect channel to another channel to verify the malfunctioning of the channel (as opposed to the sensor).

***Symptom: No channels are working:***

- ✓ Inspect circuit board for shorts, opens, or other damage.
- ✓ Is moisture present on circuit board? If so, install desiccant to absorb.

***Symptom: Channel selection appears to be random:***

- ✓ Has corrosion built up on the circuit board? Clean if necessary.
- ✓ Is there a source of electrical noise nearby? Move multiplexer or noise source if possible.

## F.5 8032 Multiplexer Specifications

<b>GENERAL:</b>	
Power Requirements	10-16 VDC (unregulated)
Quiescent Current (MICRO-800/MICRO-1000 mode)	80 $\mu$ A (16CH mode) 130 $\mu$ A (32CH mode)
Quiescent Current (GK-403 mode)	12 mA
Channel Activated Current	30 mA
Control Line Input Impedance	100 k $\Omega$ (CLOCK), 100 k $\Omega$ (RESET)
Control Line Input Levels	TTL or RS-232 ( $\pm$ 9 VDC)
Transient Protection	16 VDC Transzorbs
Operating Temperature	-40 to +60° C
<b>RELAYS:</b>	
Type	NAIS TXS2SA-4.5V DPDT non-latching
Power	11.1 mA @ 5VDC (55.5 mW)
Contact Type	Gold clad silver alloy
On Resistance	100 m $\Omega$
Coil Resistance	405 $\Omega$
Maximum Switching Power	30W (resistive)
Maximum Switching Voltage	110 VDC
Maximum Switching Current	1 A
Operate Time	$\approx$ 5 msec Max.

Release Time	≈5 msec
Switching Life	Mechanical: $5 \times 10^7$ operations Electrical @ 30W: $2 \times 10^5$ operations
Ambient Temperature	-40 to +70°C
<b>TRIPOLAR PLASMA SURGE ARRESTOR:</b>	
Nominal DC Breakdown Voltage	230V
Surge Life	100 (10/1000 ms pulse @ 200 A)
Maximum Surge Current	5 kA per side (8/20 μs pulse)
Insulation Resistance	$10^9 \Omega$
Operating Temperature	-65 to +125° C
<b>BIPOLAR PLASMA SURGE ARRESTOR:</b>	
Nominal DC Breakdown Voltage	150V
Maximum Surge Current	1 kA (8/20 μs pulse)
Insulation Resistance	$10^{10} \Omega$
Operating Temperature	-65 to +125° C
<b>INDUCTOR:</b>	
Rated Current	4A
Inductance	10μH (±20%)
D.C.R.	25mΩ MAX (at 20°C)
<b>TRANSIENT VOLTAGE SUPPRESSOR (TRANSORB)</b>	
Rated Power	1500W
Peak forward Surge Current	200A
Reverse Standoff Voltage	16.0V
<b>TRANSDUCER CONNECTION MAXIMUM OPERATING VOLTAGE LEVELS:</b>	
Common-mode Voltage/Earth Ground	16V(max)
Differential-mode Voltage (Channel # 'H' – Channel # 'L')	16V(max)
<b>RESET AND CLOCK MAXIMUM OPERATING VOLTAGE LEVELS:</b>	
Single-ended Control Voltage/System Ground	16V(max)

Table 18 - Multiplexer Specifications

## F.6 Daisy-Chain Operation

**NOTE: THE FOLLOWING SECTION ONLY APPLIES TO DATALOGGERS THAT HAVE BEEN SPECIALLY ORDERED WITH ONE OR MORE EXTERNAL MUX PORTS INSTALLED**

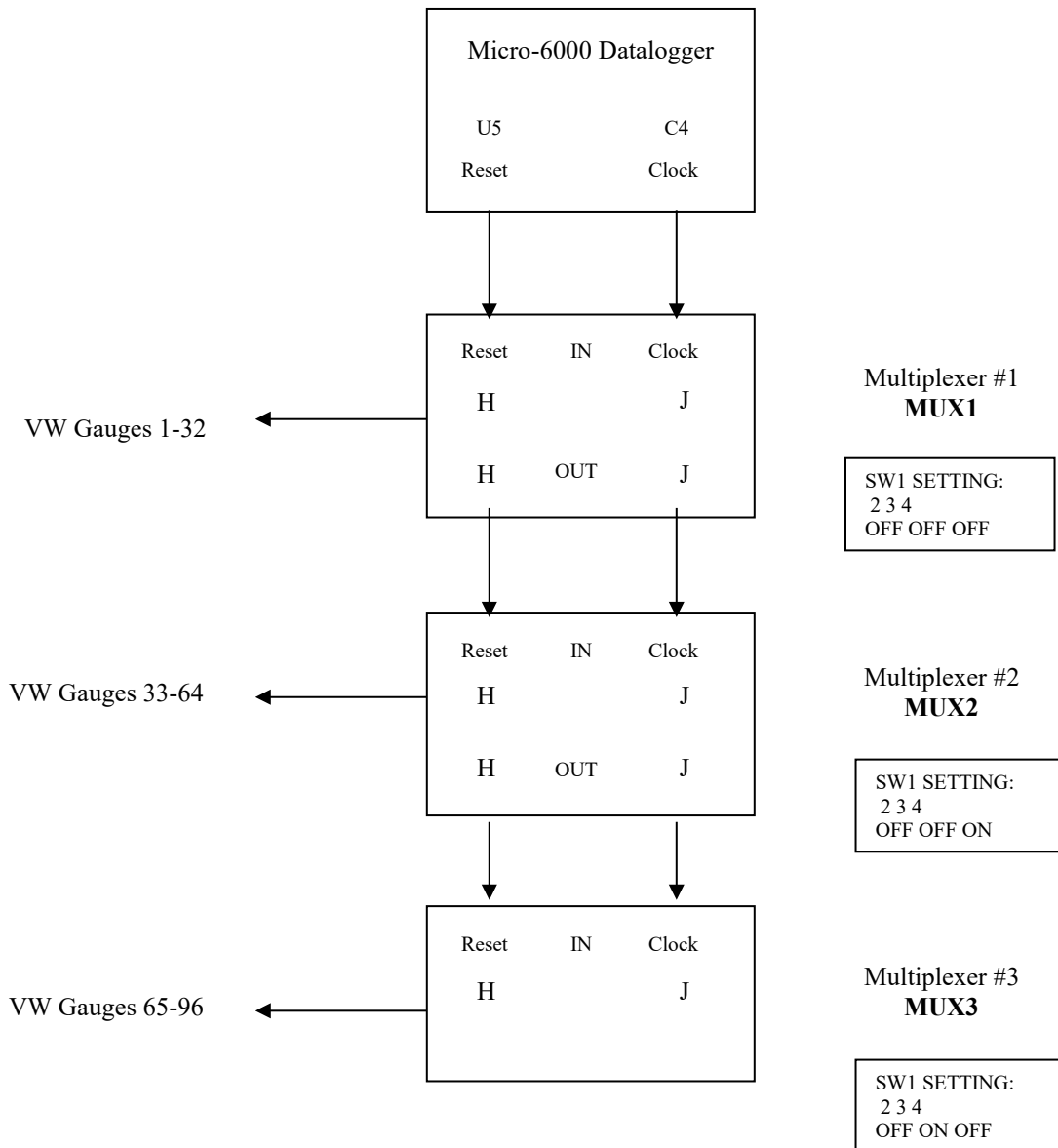
Up to eight 8032's can be "daisy-chained" together using a common RESET and CLOCK control line. This may be advantageous in situations where either there are not enough control ports available on the Micro-6000 Datalogger for the number of multiplexers desired, or to reduce the number of cables required to implement a large multi-channel system.

SW1 located on the Terminal Block side of the circuit board determines the address of each multiplexer and the corresponding signal channels. As many as 256 two-conductor channels or 128 four-conductor channels can be accessed per RESET line.

SW1 Setting			Channels Accessed
2	3	4	
OFF	OFF	OFF	1-32 (32-channel mode), 1-16 (16-channel mode) <b>DEFAULT MUX1</b>
OFF	OFF	ON	33-64 (32-channel mode), 17-32 (16-channel mode) <b>MUX2</b>
OFF	ON	OFF	65-96 (32-channel mode), 33-48 (16-channel mode) <b>MUX3</b>
OFF	ON	ON	97-128 (32-channel mode), 49-64 (16-channel mode) <b>MUX4</b>
ON	OFF	OFF	129-160 (32-channel mode), 65-80 (16-channel mode) <b>MUX5</b>
ON	OFF	ON	161-192 (32-channel mode), 81-96 (16-channel mode) <b>MUX6</b>
ON	ON	OFF	193-224 (32-channel mode), 97-112 (16-channel mode) <b>MUX7</b>
ON	ON	ON	225-256 (32-channel mode), 113-128 (16-channel mode) <b>MUX8</b>

**Table 19 - Daisy-Chain Operation/Channels Accessed**

Figure 40 is a schematic representations of the daisy-chain configuration with multiplexers configured for 32-channels. It shows three multiplexers sharing the same control ports, and a single cable is used to interconnect them.



**Figure 40 - Daisy-Chain Configuration (Does not apply to Model 8600-2)**

## F.7 Maximum 8032-5 (Tan Cable) Cable Lengths

**NOTE: THE FOLLOWING SECTION ONLY APPLIES TO DATALOGGERS THAT HAVE BEEN SPECIALLY ORDERED WITH ONE OR MORE EXTERNAL MUX PORTS INSTALLED**

The 8032 Multiplexer is a low power device, that when combined with a 6000 Datalogger can be physically located at a considerable distance from that Datalogger.

Still, there are limits to the maximum distance – mostly due to the voltage dropped by the 8032-5 MUX cable over its length. Factors such as ambient temperature, number of 8032 Multiplexers (Daisy-Chain configuration) and system battery voltage need to be considered in determining the maximum 8032-5 cable length.

For a single 8032 Multiplexer under normal operating conditions (System Battery = 12V, ambient temperature = 20 °C), the maximum recommended cable length from the Datalogger to the 8032 Multiplexer is 4588 feet ( $\approx 1400\text{m}$ ). Figure 41 displays the maximum recommended cable length for various Datalogger, Battery Voltage and ambient Temperature combinations.

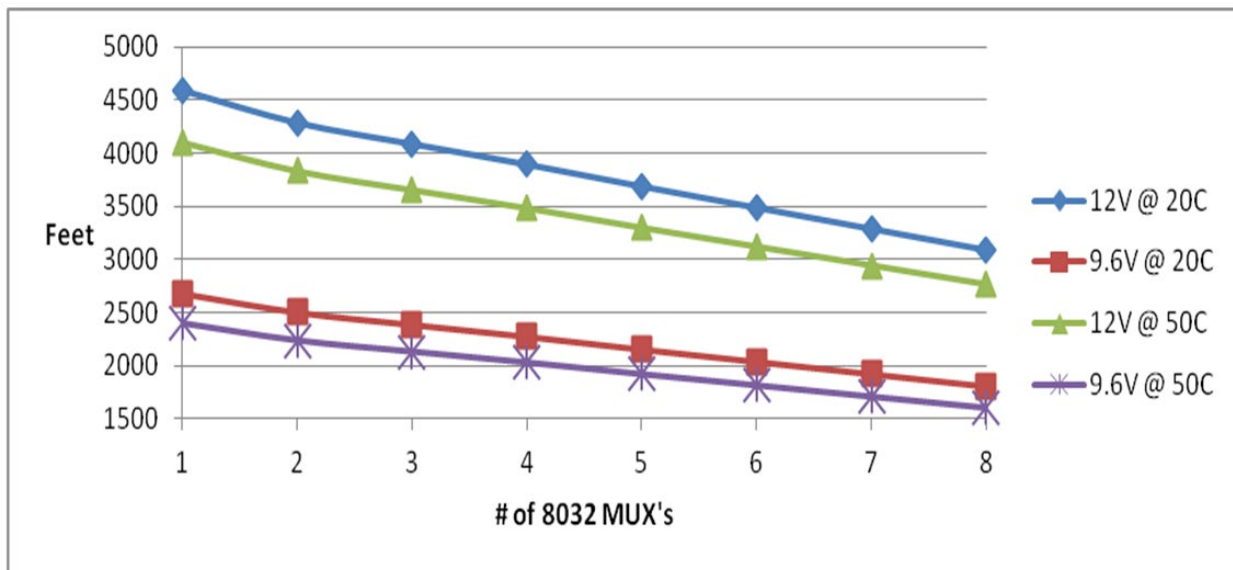


Figure 41 - Recommended Maximum Cable Length (Does not apply to 8600-2)

## **APPENDIX G. CELLULAR MODEM COMMUNICATIONS**

### **G.1 Supply**

As there are many providers, and options, available with respect to the choice of cellular modems, GEOKON requires that the customer choose his/her modem, and provider of choice (or to add another modem to an existing account).

For customers with little or no experience sourcing cellular modems, GEOKON suggests one of the following models, available from Sierra Wireless Intelligent Gateways:  
(A list of modem distributors can be found on the Sierra Wireless homepage:  
<http://www.sierrawireless.com>)

**RV50:** The RV50 modem is the lowest power Modem available from Sierra Wireless and is compatible with CDMA, GSM and International Networks according to SIM card supplied by user. This modem is recommended in Solar Applications.

**Raven XT:** The Raven XT modem is available for **Verizon** Wireless only.

**LS300:** The LS300 modem can be used with **AT&T** when Verizon service is unavailable.

**FX400:** The FX400 series modems are preferred for **International** applications.

In most static applications, a 250 MB data plan will be sufficient to program the Datalogger, communicate regularly and collect the Text based data files. An Unrestricted Static IP address is recommended for most applications. When required, a Dynamic IP address can be used with a free IP Manager Service such as provided by Sierra Wireless (Airlink).

For standard, transparent RS-232 Communications, **a template** must be loaded after the modem is provisioned. The Modem supplier will load this template for you.

**Verizon Raven XT:** [http://www.GEOKON.com/content/software/Raven\\_XT\\_Verizon\\_CSI.zip](http://www.GEOKON.com/content/software/Raven_XT_Verizon_CSI.zip)

**AT&T LS300:** [http://www.GEOKON.com/content/software/LS300G\\_ATT\\_CSI.zip](http://www.GEOKON.com/content/software/LS300G_ATT_CSI.zip)

**RV50:** [Please contact GEOKON Directly depending on Network](#)

For customers with little or no experience configuring cellular modems, GEOKON suggests contacting one of the following companies, who can provide and provision modems for use in North America:

Access Wireless Data Solutions

<http://www.accesswds.com>

[orders@accesswds.com](mailto:orders@accesswds.com)

(813) 751-2039

Industrial Networking Solutions

<http://www.industrialnetworking.com>

(972) 248-7466

If there are any doubts, concerns, or questions with respect to any of the above, please contact GEOKON. Any communication and or programming issues related to the operation of your Datalogger will be fully supported by GEOKON.

## G.2 Install

Cellular modem install kits can be provided upon request. These install kits can accommodate most cellular modems and whip or high gain antenna options. A mounting bracket, antenna bulkhead / cable and RS-232 null modem adapter are preinstalled for plug and play of the antenna and customer supplied modem.

- 1) Modem is secured in mounting bracket using the Velcro mounting strap
- 2) SMA bulkhead cable is secured to modem SMA connector and antenna secured on outside of enclosure.
- 3) Modem RS-232 port is connected through a Null Modem cable to the Datalogger CPI port using the provided CPI to RS-232 Null Modem cable.
- 4) The power supply cable provided with the modem is connected to an empty Load terminal on the Power Distribution PCB board or directly to 12 V and G on the CR6 module. Switch 12 VDC power (SW12) can also be used to control the modem power at a given interval (programming required).

**NOTE:** Verify power cable wiring in the cellular modem manufacturer provided user manual. When using a Sierra Wireless Raven XT modem, the red wire is 12 VDC and Black is Ground (white is not used). When using the Sierra Wireless LS-300 or FX400 series, the Red and White wires are both tied to +12 VDC and Black is Ground.

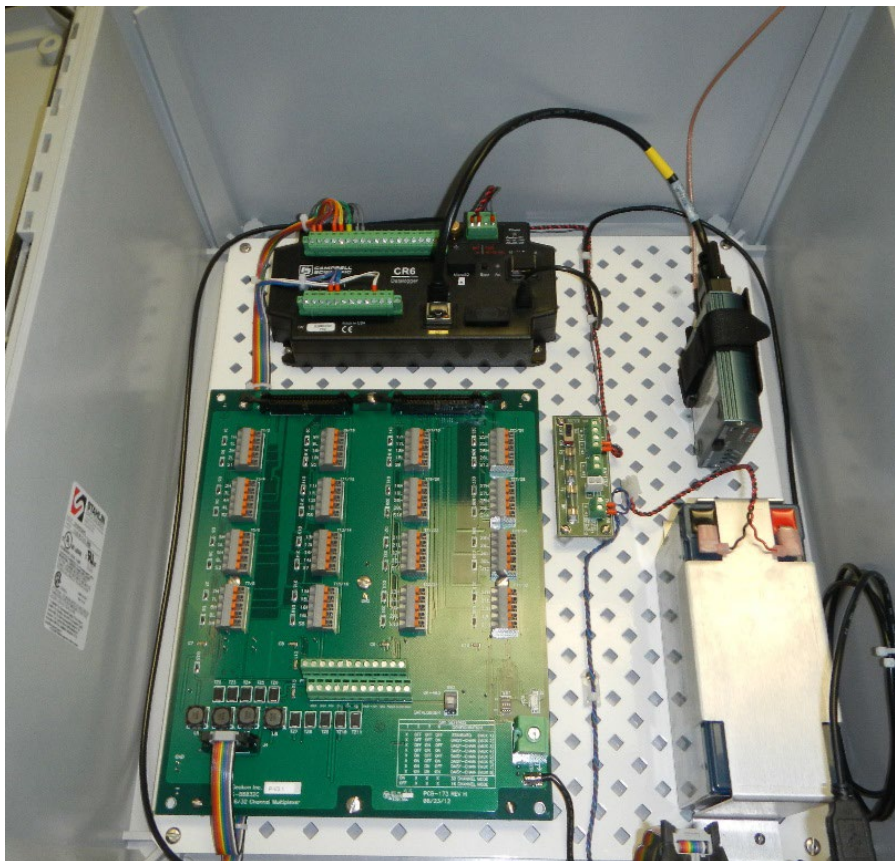


Figure 42 - Model 8600-2 with Cellular Modem Installed



### G.3 Communications

To add a communication port based off the GEOKON Cell Modem Template, press the “Add Root” button and select a device. Continue selecting devices from the Add Box as shown until the communication link to the Datalogger is represented. Once the Datalogger (CR6Series) is added to the Network Map, press “Apply”. Select “IPPort” (Figure 43) and then Select “PakBusPort (PakBus Loggers)” (Figure 44)

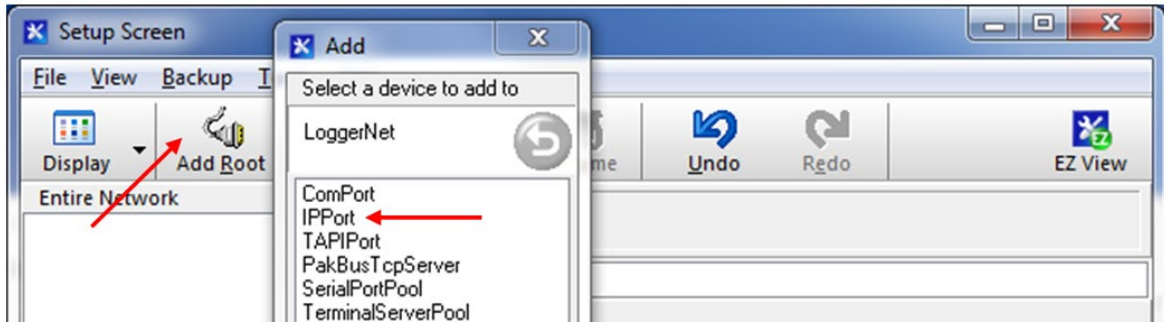


Figure 43 - Add Communications Port (Root)

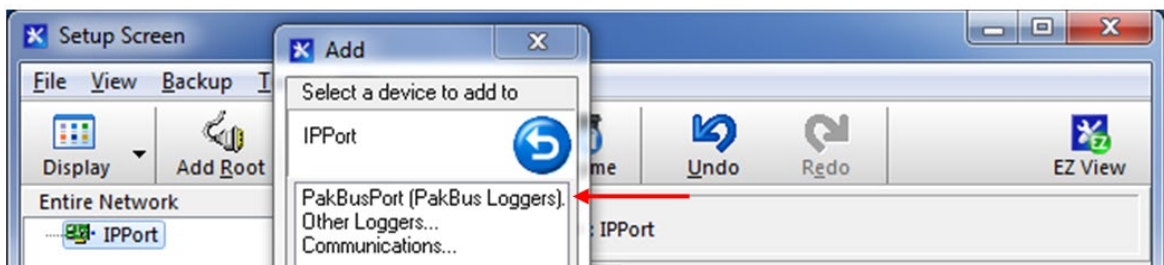


Figure 44 - Select “PakBusPort”

Select “CR6Series”. When finished, press the “Apply” button at the bottom left of the Setup Screen.

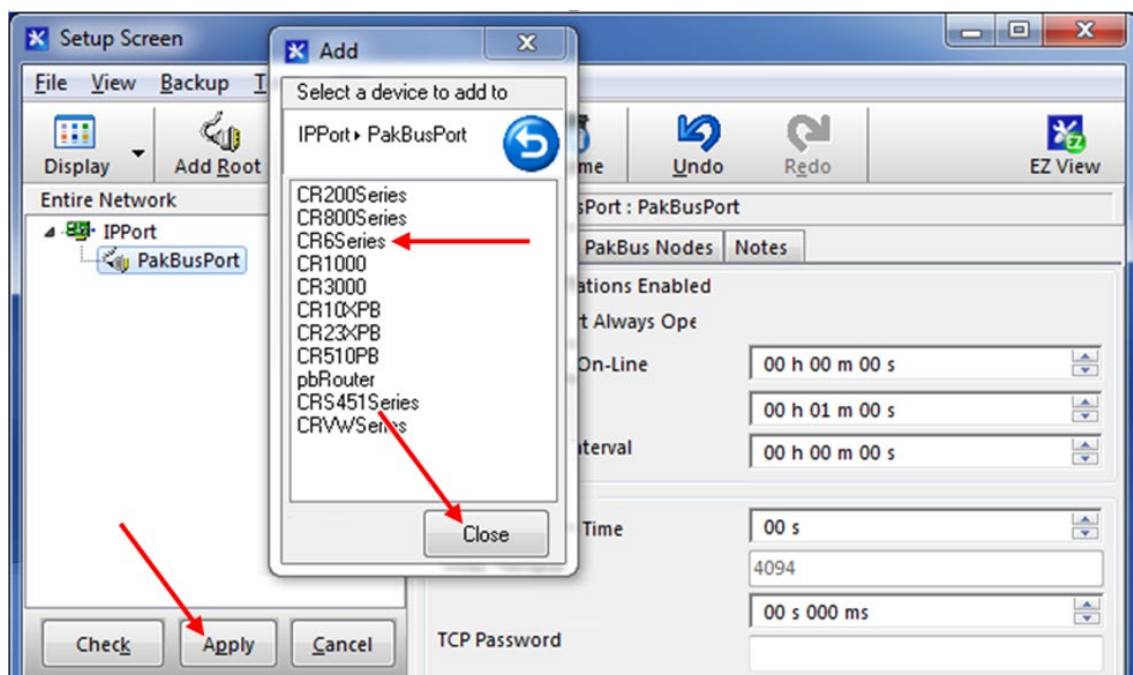
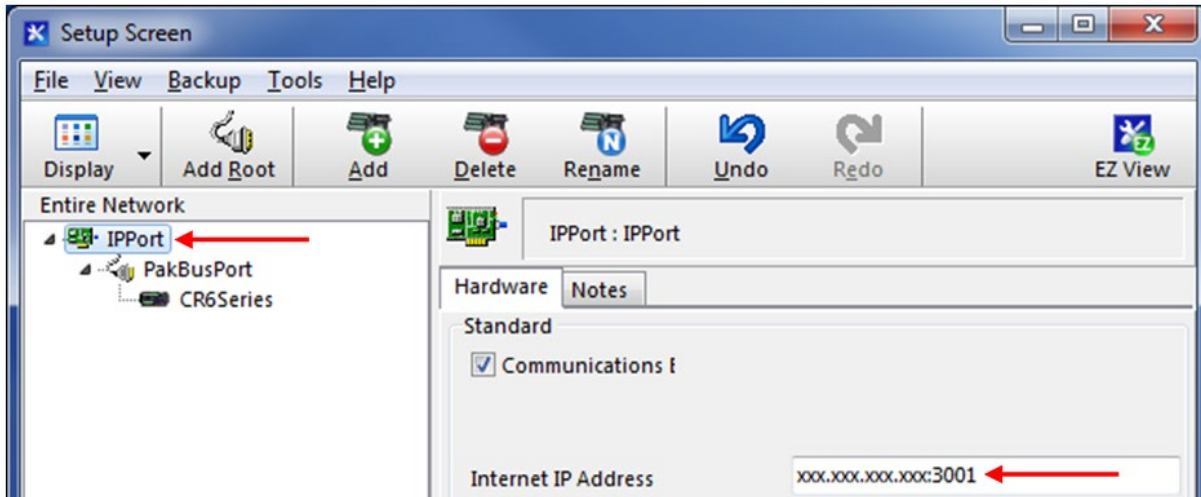


Figure 45 - Select Device to Add

While still within the Setup Screen, IP Address must be entered.  
The Cell Modem IP Address must be entered as:

**XXX.XXX.XXX.XXX:3001**

**3001** represents the default port of the Cell Modem



**Figure 46 - Enter Internet IP Address**

When finished, press the “Apply” button at the bottom left of the Setup Screen. Minimize or close the Setup Screen and go back to the LoggerNet Launch Menu.